

BONALDO

James bench

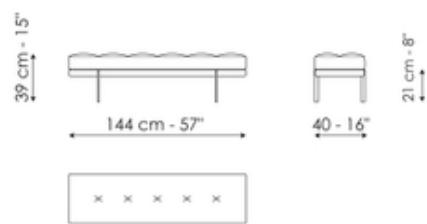
Designer: Sergio Bicego



The ideal accessory to go with the double bed from the same family, the style of the James upholstered bench is inspired by the typical elegance of 1950s design, in particular the sophisticated detail of the stitching and needlework on the upholstery of the padded seat. The stylistic theme of the upholsterd bed bench is counterpointed by the minimal and rigorous design of the metal base, which is punctuated by the clear distinction between the load-bearing surface and the four exposed cylindrical legs. It is a skilful interplay of proportions, languages, materials and formal references that go beyond stylistic conventions.



Data sheet

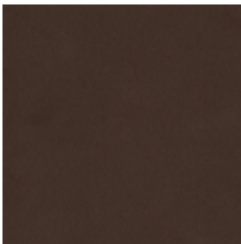


James bench

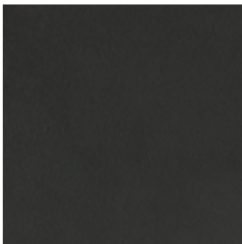
Width: 144cm
Depth: 40cm
Height: 39cm

Finishes

Base



Painted metal
Mat bronze



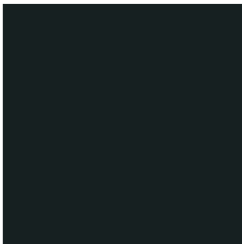
Painted metal
Mat lead



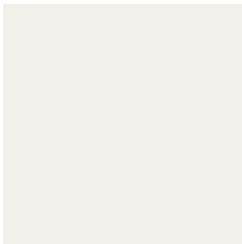
Painted metal
Mat pearl gold



Painted metal
Supreme anthracite



Painted metal
Mat black



Painted metal
Mat white



Painted metal
Mat dove grey

Materials, fabrics, leathers, colors and finishes are approximate and may slightly differ from actual ones. You can find the complete collection of Bonaldo fabrics and leathers on the website <https://bonaldo.biz>