

# **BONALDO**

## Cross lounge chair

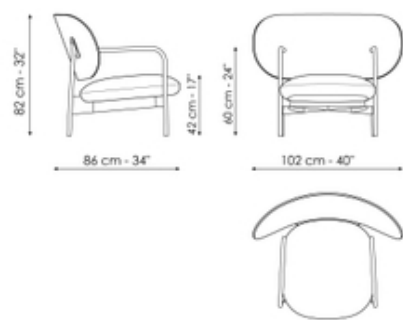
Designer: Alain Gilles



The harmonious combination of the different parts of the sleek armchair Cross lounge chair designed by Alain Gilles is the result of a balanced and original reinterpretation of the classic twentieth-century lounge chair. The completely exposed metal frame plays with the traditional x-shaped base, an element which is very often used in chairs to support the seat, but which in this case has been emphasized to the point of becoming a graphic statement and an integral part of the identity of the sleek armchair. The padded elements, the seat and the backrest, have unusual and exaggerated proportions, all aimed at welcoming and hosting the user. One of the main features of this armchair is the design of the armrest, made of a single metal tube that bends back at the front of the chair and continues before coming to a stop just before the backrest.



# Data sheet

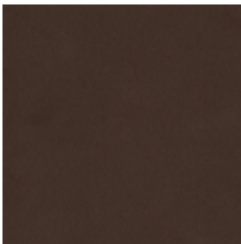


**Cross lounge chair**

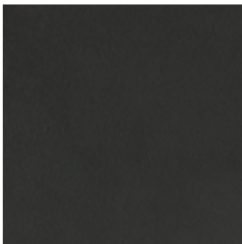
Width: 86cm  
Depth: 102cm  
Height: 82cm

# Finishes

## Base



**Painted metal**  
Mat bronze



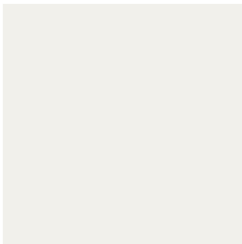
**Painted metal**  
Mat lead



**Painted metal**  
Mat pearl gold



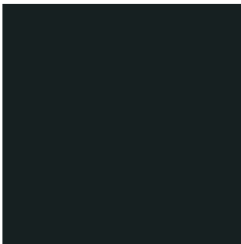
**Painted metal**  
Supreme anthracite



**Painted metal**  
Mat white



**Painted metal**  
Mat dove grey



**Painted metal**  
Mat black

---

Materials, fabrics, leathers, colors and finishes are approximate and may slightly differ from actual ones. You can find the complete collection of Bonaldo fabrics and leathers on the website <https://bonaldo.biz>