

## Mari-sol table base h:105cm

by Eugeni Quitllet

The collection, designed by Eugeni Quitllet, combines advanced technology and captivating design. Mari-Sol adapts perfectly to any environment, whether on an urban terrace or in a garden by the sea. Its elegant shape and versatile character make it the ideal piece to embellish and optimize both indoor and outdoor spaces.



## Info

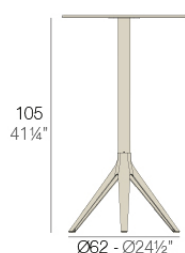
---

### Description

Extruded aluminum tube with cast aluminum base coated with epoxy baked painting. Item suitable for indoor and outdoor use. Table top not included.

Weight: 3.84 Kg

BASE 3 LEGS - BASE 3 PATAS



fixed top / fijo ref: 65011

collapsible top / abatible ref: 65011T

fixed for glass / fijo para vidrio ref: 65011V

MARI-SOL BASE MESA Ø62 H105

MARI-SOL TABLE BASE Ø24 1/2" H41 1/4"

TABLE TOPS OPTIONS - OPCIONES SOBRES



Ø50 cm  
Ø19 1/4"



50 x 50 cm  
19 1/4" x 19 1/4"



Ø59 cm  
Ø23 1/4"



59 x 59 cm  
23 1/4" x 23 1/4"

## Finishes

---

### finishes

---

#### ALUMINIUM BASE

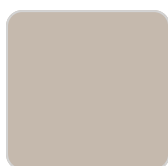
Ref. 65011V



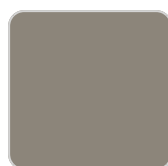
white



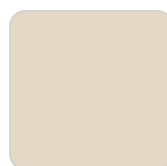
smoked



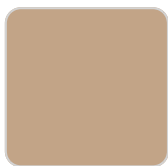
ecru



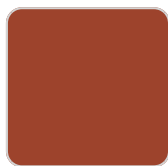
tortora



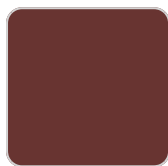
cream



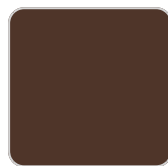
camel



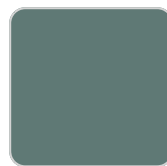
clay



garnet



brown



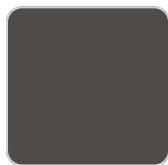
green



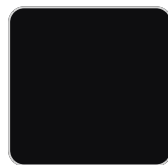
blue



gray



anthracite



black



ocean

Powder coated aluminum base with non collapsable aluminum attachment powder coated, made exclusively for our glass tops.

## Ambients

---

