

Bones planter 35x41x220

by Ludovica + Roberto Palomba

The Bones collection, designed by Italians Ludovica and Roberto Palomba, is inspired by the harmony of nature, combining slender lines and generous volumes. Each Bones planter is a statement of visual balance: forms that achieve a light yet robust presence, inviting plants and trees to integrate naturally into the space.

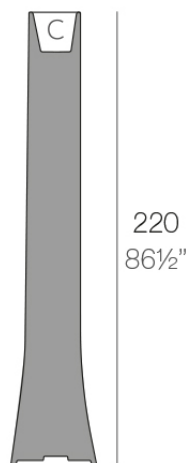


Info

Description

Pot made of polyethylene resin by rotational moulding. 100% Recyclable.
Item suitable for indoor and outdoor use. Available in different finishes.

Weight: 27 Kg



41-16 1/4"

BONES Maceta 220 C = 4 L
BONES Planter 220 C = 1 gal

Finishes

finishes

BASIC

Ref. 57001A



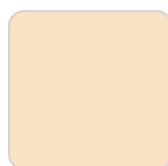
white 2001



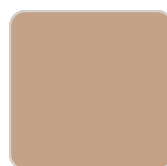
ecru 2003



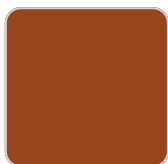
tortora 2004



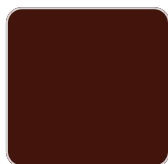
cream 2017



camel 2020



clay 2022



garnet 2015



brown 2008



green 2016



blue 2018



gray 2005



anthracite 2006



black 2002



ecru granite



cream granite



ice 2101

Matt Polyethylene

LACQUERED

Ref. 57001F



white 3101



ecru 3103



tortora 3104



cream 3117



garnet 3113



brown 3125



green 3116



blue 3118



gray 3105



anthracite 3106



black 3102

Lacquered Polyethylene

lighting

WHITE LED
Ref. 57001W



ice 2101

White internally lit unit with LED technology. Available only in matte ice white finish.

RGBW LED
Ref. 57001L



ice 2101

Unit with internal lighting with RGBW LED technology and remote control unit for switching colors. Available only in matte ice white finish. Remote control included.

RGBW LED DMX

Ref. 57001D



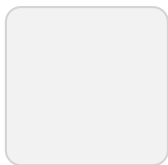
ice 2101

Unit with internal lighting with RGBW LED technology and remote control unit for switching colors. Also controlled by DMX-1024 (wireless), enabling communication between one or more products simultaneously via the DMX transmitter (not included). There are two options to choose from: Professional XLR DMX and Home WIFI DMX. (Remote control included).

Optional battery

RGBW LED BATTERY

Ref. 57001Y

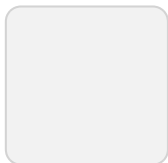


ice 2101

Unit with internal lighting with battery-powered RGBW LED technology. Includes charger and remote control for switching colors and charger. Available only in matte ice white finish.

RGBW LED DMX BATTERY

Ref. 57001DY



ice 2101

Unit with internal lighting with RGBW LED technology and remote control unit for switching colors. Also controlled by DMX-1024 (wireless), enabling communication between one or more products simultaneously via the DMX transmitter (not included). There are two options to choose from: Professional XLR DMX and Home WIFI DMX. (Remote control included).

Ambients

