

Posidonia coffee table

by Ramón Esteve

Posidonia, the new collection of **designer outdoor furniture** is capable of creating an atmosphere of serenity and balance, awakening the user's sensibility and inviting them to enjoy every moment.



Info

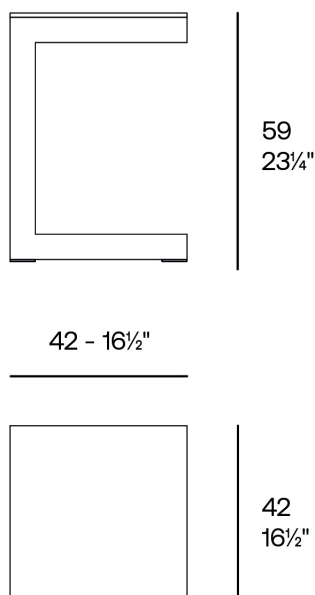
Description

The Posidonia coffee table, designed by Ramón Esteve, stands out for its thermo-lacquered aluminium structure, prepared to face different weather conditions, offering durability and lightness.

Its HPL surface is highly resistant to scratches and is available in different sizes to adapt to different spaces.

In addition, a wide palette of colours allows you to create customised combinations of HPL surface and aluminium structure.

Weight: 2.58 Kg



POSIDONIA Mesa Café 42x42x59
POSIDONIA Coffee Table 16¹/₂"x16¹/₂"x23³/₄"

Finishes

finishes

ALUMINIUM

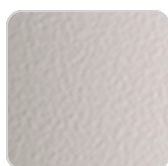
Ref. 54708



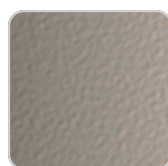
white



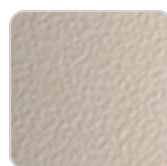
smoked



ecru



tortora



cream



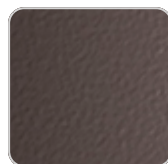
camel



clay



garnet



brown



green



blue



gray



anthracite



black



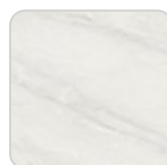
ocean

Lacquered aluminium profile.

tabletops

Solid Core

Ref. 54708HPL



VONDOM

ecru stone



smoked

tortora stone



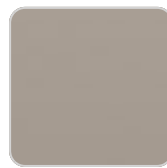
white (white edge)

black stone



ecru

gray stone



tortora

white stone



cream



garnet



brown



green



blue



anthracite

Solid Core wood

Ref. 54708HPL



oak1



oak2

Ambients

