

Vineyard large coffee table legs

by Ramón Esteve

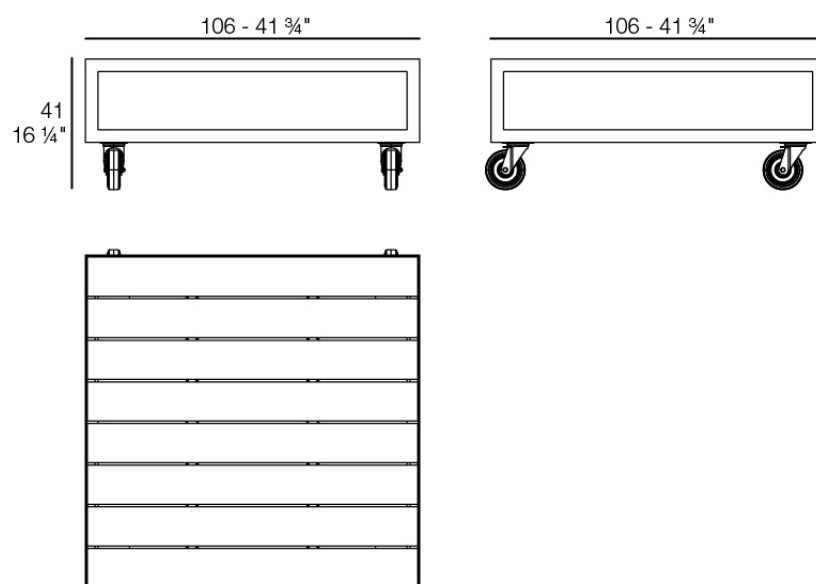
The Vineyard collection, designed by Ramón Esteve, captures the essence of Mediterranean style, combining elegance and comfort in each of its pieces. Inspired by vineyards and outdoor living, this collection is perfect for creating relaxed and welcoming environments.



Info

Description

Weight: 43 Kg



VINEYARD Mesa L
VINEYARD Table L

Finishes

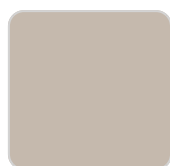
finishes

ALUMINIUM

Ref. 54503ZSU



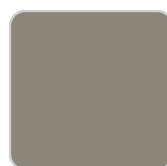
white



ecru



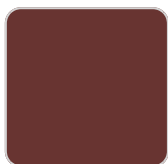
smoked



tortora



cream



garnet



brown



green



blue



gray



anthracite



black

panel/top

Teak

Ref. 54503AA



natural teak



weathered teak

Ambients

