

Faz wood high table 50x50x105

by Ramón Esteve

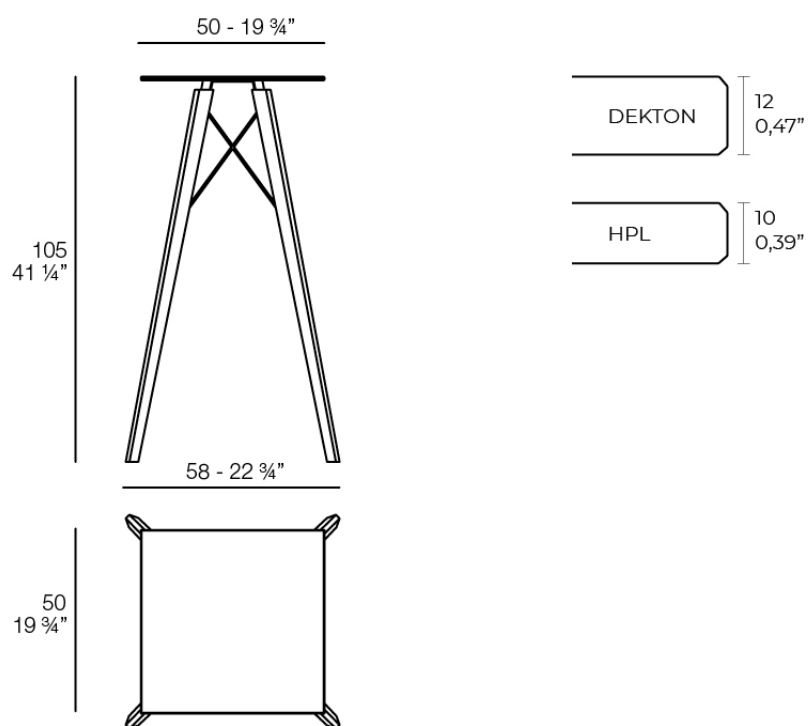
Vondom's Faz collection, designed by Ramón Esteve, is one of the firm's most iconic collections. It stands out for its modular design and sophistication, representing harmony, serenity and timelessness through mineral and emphatic shapes. Faz transforms environments with its unique combination of material and light, creating an enveloping and exclusive atmosphere.



Info

Description

Weight: 9.74 Kg



FAZ WOOD Mesa Alta 50 x 50
FAZ WOOD Dinning table 19 3/4 x 19 3/4"

Finishes

tabletops

HPL

Ref. 54315



white



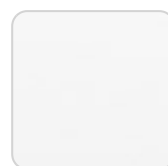
ecru



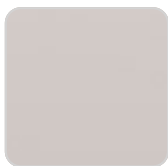
gray



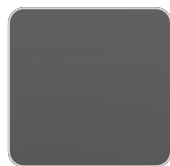
black



white(black edge)



ecru(black edge)



black(black edge)

HPL black edge

Solid Core

Ref. 54315B



smoked



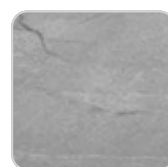
ecru stone



tortora stone



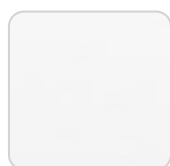
black stone



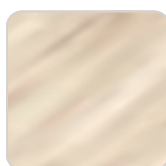
gray stone



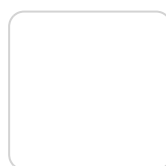
white stone



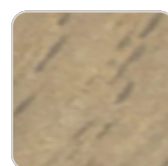
white (white edge)



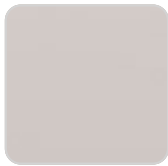
oak1



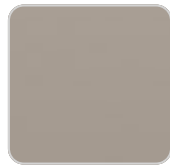
white



oak2



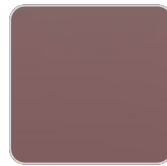
ecru



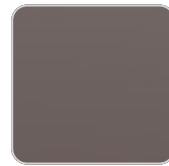
tortora



cream



garnet



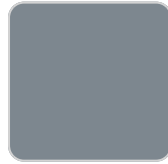
brown



green



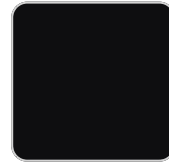
blue



gray



anthracite



black

HPL solid core

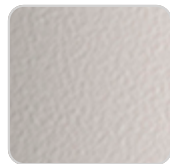
estructura

ALUMINIUM

Ref. VVAR03098



white



ecru



black

legs

Ash

Ref. VVAR03082



wood 1



wood 2

Ambients

