

## Nano chrismy

by Teresa Sapey

The Chrismy collection, designed by Teresa Sapey, is a contemporary take on the classic Christmas tree. Inspired by natural and organic forms, Chrismy rises with an undulating silhouette that evokes movement and lightness, providing a warm and enveloping atmosphere thanks to its interior lighting.



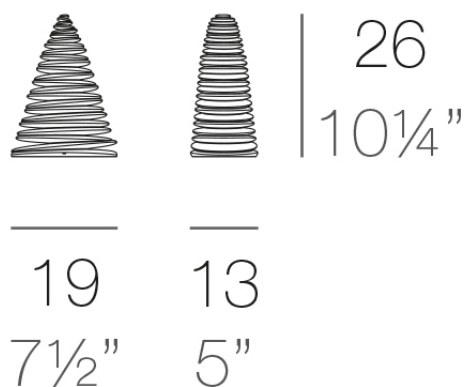
## Info

---

### Description

Made of polyethylene resin by rotational moulding. 100% Recyclable. Item suitable for indoor and outdoor use. Available in different finishes.

Weight: 0.37 Kg



CHRISMY Nano Árbol 25cm  
CHRISMY Nano Tree 9 3/4"

## Finishes

---

### finishes

---

#### LACQUERED

Ref. 49069F



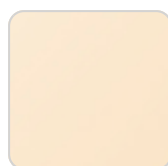
white 3101



ecru 3103



tortora 3104



cream 3117



garnet 3113



brown 3125



green 3116



blue 3118



gray 3105



anthracite 3106



black 3102

#### Lacquered Polyethylene

### lighting

---

#### WHITE LED

Ref. 49069W

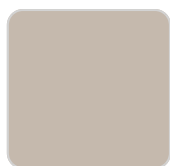


ice 2101

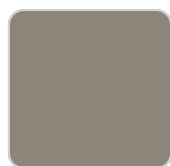
White internally lit unit with LED technology. Available only in matte ice white finish.

## RGBW LED BATTERY

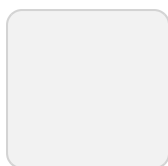
Ref. 49069Y



ecru 2003



tortora 2004



ice 2101



khaki



beige

Unit with internal lighting with battery-powered RGBW LED technology. Includes charger and remote control for switching colors and charger. Available only in matte ice white finish.

