

# **BONALDO**

## Lovy pouf

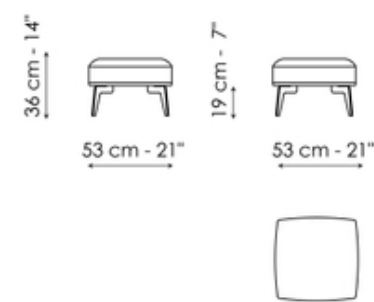
Designer: Sergio Bicego



Conceived as an original and sophisticated reinterpretation of the classic design of the 1950s and 1960s in a contemporary key, the large family of Lovy upholstered furniture also includes a dynamic pouf ottoman, an ideal complement to the coordinated sofa and armchair, as well as an independent element which can also be used as a living room coffee table. Sergio Bicego's versatile design includes two types of pouf , distinguished by the round or square shape of the high comfortable cushion, and notable for the typical element of the cross-shaped metal frame, emphasized by the four legs. The cover is in removable fabric and available in numerous different colours.

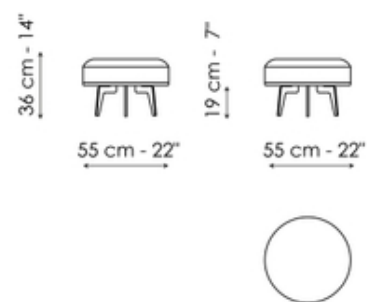


# Data sheet



**Lovy pouf 53x53**

Width: 53cm  
Depth: 53cm  
Height: 36cm

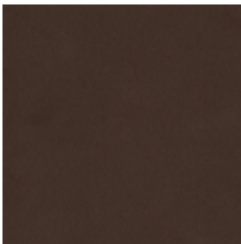


**Lovy pouf Ø55**

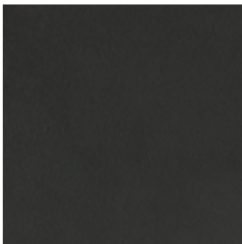
Width: 55cm  
Depth: 55cm  
Height: 36cm

# Finishes

## Base



Painted metal  
Mat bronze



Painted metal  
Mat lead



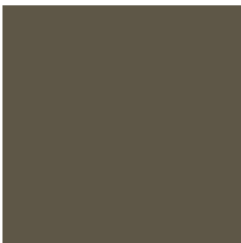
Painted metal  
Mat pearl gold



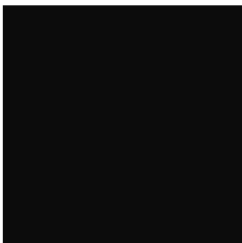
Painted metal  
Mat copper



Painted metal  
Mat brass



Metal finish  
Brown nickel



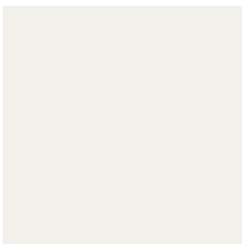
Metal finish  
Dark nickel



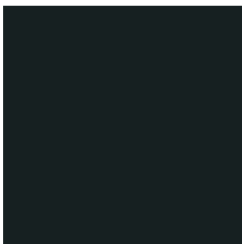
Metal finish  
Clouded chrome



Painted metal  
Supreme anthracite



Painted metal  
Mat white



Painted metal  
Mat black



Painted metal  
Mat dove grey

Materials, fabrics, leathers, colors and finishes are approximate and may slightly differ from actual ones. You can find the complete collection of Bonaldo fabrics and leathers on the website <https://bonaldo.biz>