

# BONALDO

## James

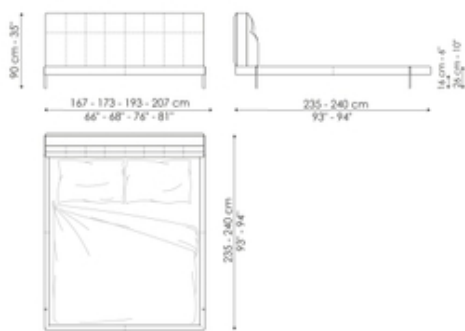
Designer: Sergio Bicego



In James design double bed the lightness of the bed frame contrasts with the volumes of the padded section of the headboard which seems suspended in space. The unique nature of the James double bed design for bedroom is obvious from this key element, since this is a bed whose presence alone is capable of endowing a space with both character and discretion. This meeting of proportions and formal synthesis is also dependent on the qualities of the materials: the dry coldness of the metal and the soft welcoming warmth of the fabric, leather or eco-leather fabrics. A further ornamental motif is the stitching and needlework on the headboard cover which enhance it by recalling the typical elegance of the 1950s. The James double bed design can be completed with the coordinated bench of the same name.



# Data sheet



## James

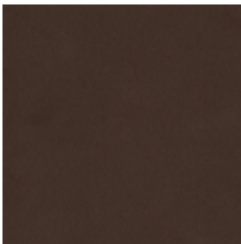
Width: 167-173-193-207cm

Depth: 235-240cm

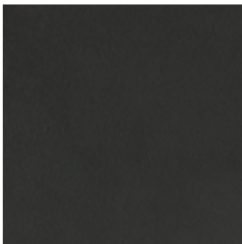
Height: 90cm

# Finishes

## Base



**Painted metal**  
Mat bronze



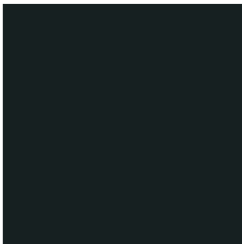
**Painted metal**  
Mat lead



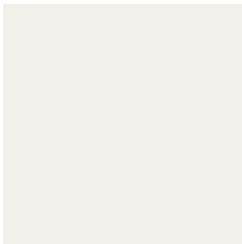
**Painted metal**  
Mat pearl gold



**Painted metal**  
Supreme anthracite



**Painted metal**  
Mat black



**Painted metal**  
Mat white



**Painted metal**  
Mat dove grey

---

Materials, fabrics, leathers, colors and finishes are approximate and may slightly differ from actual ones. You can find the complete collection of Bonaldo fabrics and leathers on the website <https://bonaldo.biz>