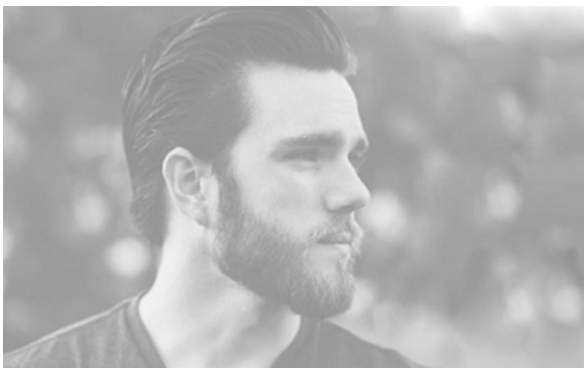




Rise

Rise defies expectations—delivering a beautifully modern European aesthetic at an impressively competitive price, all while upholding Via Seating's highest standards of quality, durability, comfort & ergonomics. This thoughtfully crafted chair features a contoured comfort foam seat, optional height-adjustable frame-matching arms and a 4-way stretch elastomeric mesh back for superior support. A bold accent bar adds a touch of color, making Rise as visually striking as it is functional—proving that exceptional design & performance can come without compromise.



Design by Daniel Laval

Daniel Laval is a Swedish furniture product designer. He was born in 1984 in Sweden and later graduated from Konstfack University College of Art, Craft & Design. He debuts as a designer for Via Seating, collaborating with Studio V on the development of the Rise ergonomic task chair.



Visit viaseating.com/indoor-products



pinterest.com/viaseating



instagram.com/via_seating



www.youtube.com/@via_seating



webpage

Smart Features



1) Ergonomic Support: The Rise chair's 4-way stretch elastomeric mesh back conforms to the spine, providing breathable support and promoting airflow for enhanced comfort during extended use.

2) Lumbar Support Insert: Rise's lumbar insert enhances lower back support, promoting ergonomic comfort during extended use.

3) Signature Comfort: Rise features Via Seating's proprietary comfort foam, delivering long-lasting support with a plush, responsive feel that outperforms standard cushioning.

4) Body Balance Synchro Mechanism: The Rise chair's body balance synchro mechanism offers a 4-position back lock, seat height, and seat depth adjustments, promoting ergonomic comfort and adaptability.

Product Detail

Models

Task/work chairs & stools
Sit-to-stand chairs
Conference applications

Compliance

ANSI/BIFMA X5.1
BIFMA LEVEL 1 & BIFMA Compliant
CLEAN AIR SILVER certified¹
Weight Capacity: 300lb
Warranty: 12 year
(5 mesh, 2 stocked textiles)

Finishes

Charcoal black & cloud grey framework
Black, grey, blue & red mesh
Black, light grey, vibrant blue & vibrant red accent colors
Stocked & graded-in textiles
Customer's Own Material (COM)

Framework

Mid back with mesh back

Arm Options

Armless
6-way signature

Mechanisms

Tilt with back lock
Body balance synchro
Telescoping gas lift
Repositionable stool footrest

Key Dimensions²

Max Height: 41.0"
Max Width: 29.0"
Seat Depth: 17.5"
Seat to Floor Height: 16.5" - 20.5"

Specification Tools

Spec It
CET, CI Library & ProjectSpec
GSA (contract #GS-28F-005CA)
Hedberg
Cyncly ("CAP, GIZA, Worksheet")
KITS Collaborator

Note 1: Meets conformance to ANSI/ BIFMA e3 Furniture Sustainability Standard credit 7.6.1 & meets BIFMA standards of the standard UL GreenGuard certification.

Note 2: Based on model with arms #224-45C-22A.

More at viaseating.com/series/rise-chairs

