

m o o o i

Lolita Table Lamp

NIKA ZUPANC



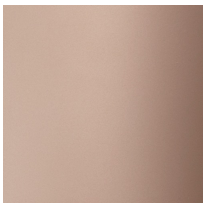
Who is afraid of pink? My imagination chases female archetypes intentionally. Frivolous, even naive objects are my favorite victims. And when, during such a process, I manage to be creative in an evidently reserved way, I then touch the purest meaning of my work and frivolity becomes timeless elegance.

Detailing



The Lolita conveys a mood of understated elegance with an unmistakable hint of playfulness. Playful as it is, the shade can be tilted.

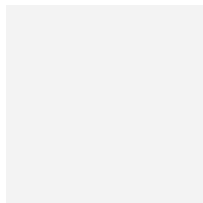
Colours



London Rose



Pink



White

Lolita Table Lamp

Dimensions

37cm | 14.6"



Product

WIDTH 37cm | 14.6"
HEIGHT 78cm | 30.7"
DEPTH 37cm | 14.6"
DIAMETER 37cm | 14.6"
WEIGHT NETTO 2.5kg | 5.51lbs

Packaging

WIDTH 46cm | 18.1"
HEIGHT 93cm | 36.6"
CUBAGE 0.2m³ | 6.95ft³
LENGTH 46cm | 18.1"
WEIGHT 4.7kg | 10.36lbs

Technical CCC

MATERIAL
ABS shade, polyurethane base.

ENERGY LABEL
A++ to E

NUMBER OF LIGHTSOURCES
1

FREQUENCY
50/60

LAMPHOLDER
E14

PLUG TYPE
Europlug (Type-C)

SWITCH
In line on/off switch

LIGHTSOURCE TYPE
Incandescent

INPUT VOLTAGE
220-240V

MAX POWER CONSUMPTION
25W

RECOMMENDED LIGHTSOURCE

CABLE COLOUR
Transparent with tinned cores

CABLE LENGTH
150cm | 59.1"

LIGHT DIRECTION
All directions

Technical CE

MATERIAL
ABS shade, polyurethane base.

ENERGY LABEL
A++ to E

LIGHTSOURCE TYPE
Incandescent

NUMBER OF LIGHTSOURCES

1

FREQUENCY

50/60

LAMPHOLDER

E14

PLUG TYPE

Europlug (Type-C)

SWITCH

In line on/off switch

**INPUT VOLTAGE**

220-240V

MAX POWER CONSUMPTION

25W

RECOMMENDED LIGHTSOURCE**CABLE COLOUR**

Transparent with tinned cores

CABLE LENGTH

150cm | 59.1"

LIGHT DIRECTION

All directions

*Technical UL***MATERIAL**

ABS shade, polyurethane base.

ENERGY LABEL

A++ to E

NUMBER OF LIGHTSOURCES

1

FREQUENCY

50/60

LAMPHOLDER

E12

PLUG TYPE

US plug (Type A)

SWITCH

In line on/off switch

**LIGHTSOURCE TYPE**

Incandescent

INPUT VOLTAGE

220-240V

MAX POWER CONSUMPTION

25W

CABLE COLOUR

Black

CABLE LENGTH

150cm | 59.1"

LIGHT DIRECTION

All directions