

FLOS

F3010061 White

Glo-Ball Suspension 2

Designed by Jasper Morrison, 1998



Halogen - 150W

Suspension lamp providing diffused light. Diffuser consisting of an externally acid-etched, hand blown, flashed opaline glass. Transparent, injection molded polycarbonate diffuser support. 30% fiberglass reinforced injection-molded polyamide rose; pressed and galvanized ceiling fitting. Steel suspension cable.

Are you a professional and your project needs consulting and support?

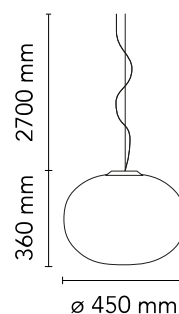
BOOK AN APPOINTMENT

Main specifications

| | |
|------------------------|---------------------|
| EAN | 8059607002223 |
| Mounting | Suspension |
| Environments | Indoor dry location |
| Light source type | Bulb |
| Light sources included | No |
| Lamp category | Halogen |
| Lamp holders | E27 |
| Ilcos | HSGS |
| Number of lamps | 1 |
| Power (W) | 150 |

Physical

| | |
|-----------------------------|-------|
| Colour | White |
| Length (mm) | 450 |
| Cord colour | Clear |
| Cord length (mm) | 2700 |
| Canopy colour | White |
| Canopy length/diameter (mm) | 146 |
| Canopy height (mm) | 36 |
| Net weight (kg) | 3.77 |
| Package volume (m3) | 0.13 |
| IP internal | 20 |



Download

Mounting instructions [↓ PDF](#)

Photometric Files

LDT / IES [↓ LDT](#)

Technical Drawings

2D [↓ ZIP](#)

3D [↓ ZIP](#)

[Bim](#) [↓ ZIP](#)



<https://professional.flos.com/en/global/product/glo-ball-suspension-2-f3010061/>

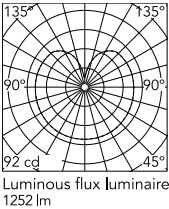
F3010061

©2022 Flos - P.IVA 00290820174 - 5/8/2025

professional.flos.com | info@flos.com 1/5

In our constantly evolving world and business, technical upgrades happen every day. This means all product specifications and data are subject to change without warning in order to improve reliability, function, performance or otherwise. We make every effort to ensure the accuracy of our product images, however due to different lighting and screens used for viewing, the colours may vary. Images are indicative of the quality and style of the product but may not represent the precise details of the product you receive. This is because we are constantly working to make improvements. For aesthetic reasons, cables and/or electrical elements are often not shown. Refer to technical data sheets for all technical data. Images and colours are not part of any contract or warranty in any way.

Schematic light drawing



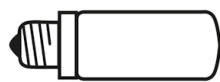
Photometric

| | |
|--------------------|----------------|
| Lighting type | Total |
| Light distribution | Roto symmetric |
| Extreme cut off | No |

Electrical

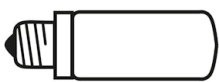
| | |
|--------------------|--|
| Insulation class | I |
| Frequency (Hz) | 50/60 |
| Main voltage (Vac) | 220-250 |
| Dimmable | Yes |
| Dimming interface | Remote Dimmable (Dimmer Not Included) |
| Batteries inside | No |

Bulbs



NOT INCLUDED

RF26259
LED Lamp 18W E27 2700K
Dimmable



NOT INCLUDED

RF26258
LED Lamp 18W E27 3000K T38
Dimmable



NOT INCLUDED

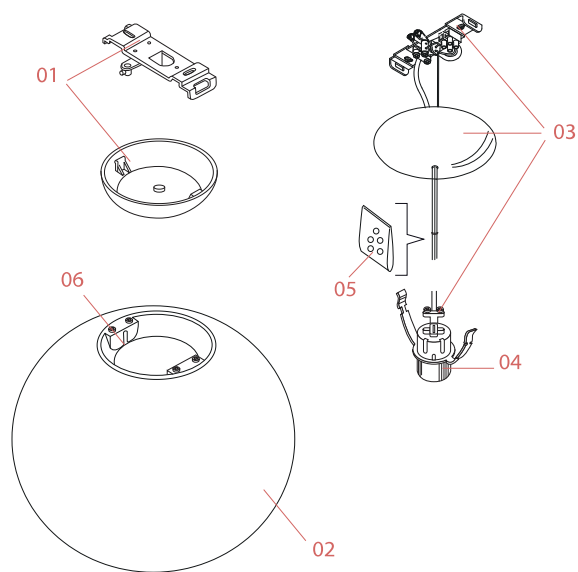
RF32288
LED Lamp E27 15W 2700K T38



NOT INCLUDED

RF32289
LED Lamp E27 15W 3000K T38

Spare Parts



- | | | |
|-----|--|-----------|
| 01. | White rose assembly | RA3690209 |
| 02. | Glo-Ball Suspension2 white diffuser | F3015061 |
| 03. | Glo-Ball Suspension 2 electrical wiring assembly | A2512000A |
| 04. | Glo-Ball Suspension 2 Bjb e27 lamp holder | RF04322 |
| 05. | Kit of 5 or rings | RF05382 |
| 06. | Glo-Ball Suspension 2 Ring nut assembly for diffuser | RF09514 |



RA3690209

White rose assembly



F3015061

Glo-Ball Suspension2 white
diffuser



A2512000A

Glo-Ball Suspension 2 electrical
wiring assembly



RF04322

Glo-Ball Suspension 2 Bjb e27
lamp holder



RF05382

Kit of 5 or rings



RF09514

Glo-Ball Suspension 2 Ring nut
assembly for diffuser