

caracole



MAIN EVENT

sgu-021-011-a

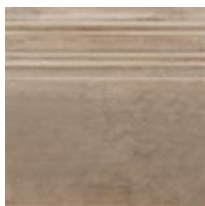
COLLECTION: Signature Metropolitan

DIMENSIONS: 99.75W x 42.75D x 34.5H

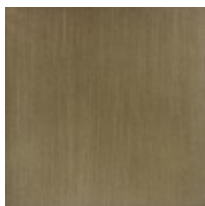
With an iconic kidney shape, this sumptuous sofa offers enveloping comfort in a warm caramel-colored velvet. Its gracefully flowing form features a smooth back and bowed bench seat, with French seams for a distinctive accent. Bronze sabre-style legs elevate its curved wood base, finished in Duty Silver for a touch of luxe. Toss pillows in a shimmering cut velvet add a painterly stripe and pop of contrast.

CONSTRUCTION: 8-way hand tied seat. | Plush poly foam cushion. | Pure feather down pillows.

FINISH:

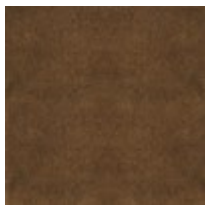


Dusty Silver

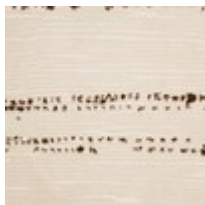


Bronze Plated Metal

FABRIC:



Body Fabric: 2876-80CC



Pillow Fabric: 2-20" x 16" Pillows and 2-18" x 24" Pillows
6127-34CC

