

# caracole



## SEVILLE SWIVEL CHAIR

m130-421-131-a

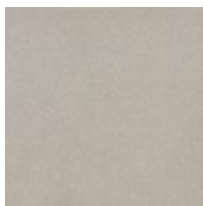
**COLLECTION:** LA MODA

**DIMENSIONS:** 32W x 33.75D x 33.75H

An all around knockout, this armless swivel introduces a simple Euro-shape with tactile appeal. A nod to the classic wing chair, its sculptural silhouette is masterfully upholstered in a touchable boucle chenille and creamy suede fabric around the back, for a neutral tone-on-tone look that's luxurious and easy to clean. A wood base in Soft Silver paint adds interest and a hint of shimmer.

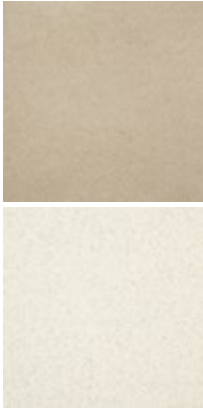
**CONSTRUCTION:** No sag seat. | Plush poly foam cushion. | Fiber filled pillow.

**FINISH:**



Soft\_Silver\_Paint

**FABRIC:**



Pillow Fabric: 1-23''' x  
19''' Pillow 2845-  
34CC-P

Body Fabric: Outside  
2846-34CC-P  
Performance, Inside  
2845-34CC-P  
Performance