

caracole



BACHELOR LARGE NIGHTSTAND

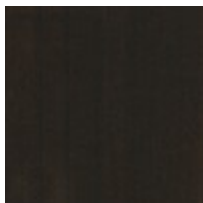
cla-024-066

COLLECTION: CARACOLE CLASSIC

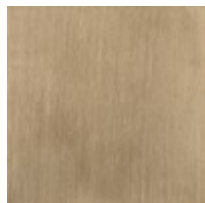
DIMENSIONS: 32W x 19D x 25H

This large, masculine nightstand uses hand-applied Tupelo veneers with a high-gloss Otter finish to achieve its handsome demeanor. The three drawers have rounded front edges and are punctuated by three recessed porthole pulls in Champagne Gold. The soft-closing drawers open to deep cases finished in UV Noir. The Dark Chocolate base is reset as a finishing touch.

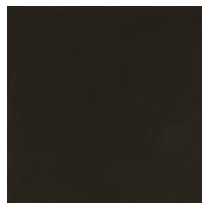
FINISH:



Otter Gloss



Champagne Gold



Dark Chocolate

