

caracole



BACHELOR DRESSER

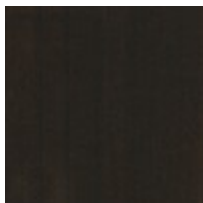
cla-024-014

COLLECTION: CARACOLE CLASSIC

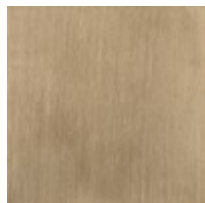
DIMENSIONS: 72W x 20D x 32.5H

Long, dark and handsome, this dresser uses hand-applied Tupelo veneers with a high-gloss Otter finish to achieve its suave demeanor. The six drawers have rounded front edges and are punctuated by six recessed porthole pulls in Champagne Gold. The soft-closing drawers open to deep cases finished in UV Noir. The Dark Chocolate base is reset as a finishing touch.

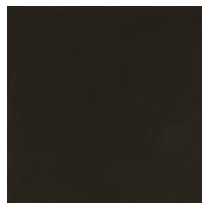
FINISH:



Otter Gloss



Champagne Gold



Dark Chocolate

