

SEELA | S316

Antti Kotilainen | 2018



SEELA

Antti Kotilainen | 2018

When they communicate, it is the best of all possible worlds. Man and nature together, one observes, the other suggests shapes and materials. This extraordinary encounter has led to a lesson in Finnish design. The encounter between Antti Kotilainen and Lapalma has resulted in SEELA, a chair that expresses beauty, with spontaneous contact between wood, polypropylene and steel. The sinuous shell on light bases has an integrated seamless seat-pad. Countless variations. Much serenity.

Product selected for the Quick Ship program. [download the PDF](#)



SEELA

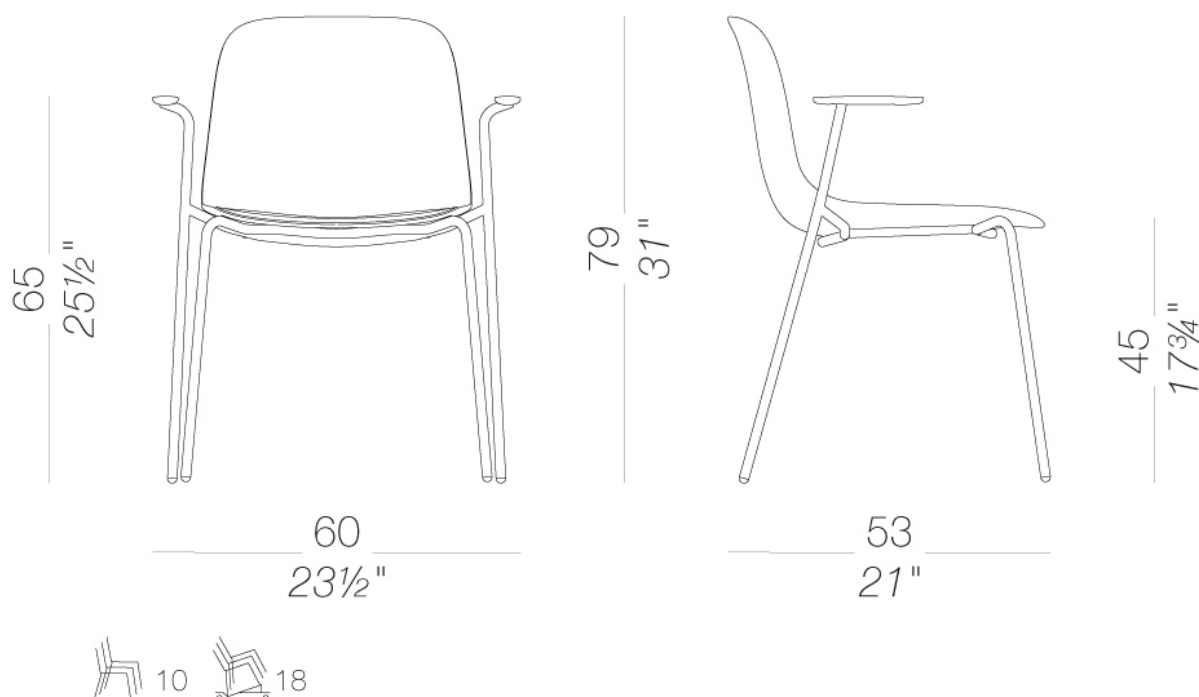
Antti Kotilainen | 2018



| S316 stackable with armrests

Shell in polypropylene with integrated seamless seatpad in polypropylene, wood or fabric, easily removable with 4 screws and replaceable. A fully upholstered shell without removable seat-pad is also available. Stackable base 4 legs in mat chromed steel or powder coated. Armrests in polypropylene. Glides in nylon with felt.

TEST Fire resistance - class 1 - PP
TEST 1 IM - Jet, Remix, Tonica, Valencia



SEELA | S316

Antti Kotilainen | 2018

frame



powder coating
pistacchio
1 Colors



powder coating
perla
1 Colors



powder coating
celeste
1 Colors



powder coating
mattone
1 Colors



powder coating
oliva
1 Colors



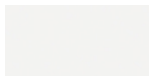
powder coating
tortora
1 Colors



metal
mat chromed
1 Colors



powder coating
black
1 Colors



powder coating
white
1 Colors

shell

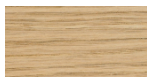


plastics
polypropylene
10 Colors

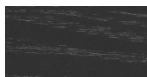
seat-pad



plastics
polypropylene
10 Colors



wood
blanch oak
1 Colors



wood
black open pore
1 Colors

armrests



plastics
polypropylene
10 Colors

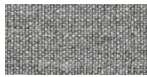
upholstery



fabric
Canvas 2 - Grade C
45 Colors



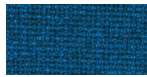
fabric
Steelcut Trio 3 -
Grade D
54 Colors



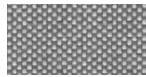
fabric
Remix 3 - Grade C
72 Colors



fabric
Tonica 2 - Grade C
39 Colors



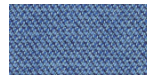
fabric
Medley - Grade A
37 Colors



fabric
Maya - Grade A
43 Colors



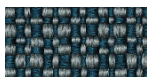
fabric
Jet - Grade A
66 Colors



fabric
Capture - Grade B
60 Colors



fabric
Crisp - Grade B
40 Colors



fabric
Ilris - Grade B
34 Colors



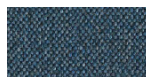
ecoleather
Valencia - Grade B
72 Colors



fabric
Grain - Grade. B
50 Colors



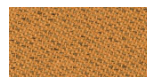
fabric
Re-wool - Grade C
24 Colors



fabric
Main Line Flax -
Grade. B
57 Colors



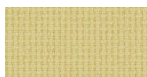
fabric
Blazer - Grade. C
77 Colors



fabric
Chili - Grade. A
47 Colors



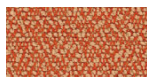
fabric
Umber - Grade. B
36 Colors



fabric
Nobel - Grade. C
30 Colors



fabric
Naveli - Grade. C
24 Colors



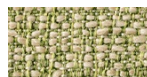
fabric
Fiocco - Grade. B
34 Colors



fabric
Atrium - Grade. C
16 Colors



fabric
Panama - Grade. A
48 Colors



fabric
Sorrento - Grade. B
22 Colors

SEELA | S316

Antti Kotilainen | 2018

consult the portfolio for the range of colors, fabrics, eco-leather, soft-leather.

use and maintenance instructions

Clean all parts in wood, leather, fabric and metal with a damp cloth or a diluted neutral cleaner. Do not use cleaners with alcohol, bleach, solvent or abrasive products. Any liquid spilt on the product must be wiped up immediately. When lifting or moving the product, hold it on the structure and not under the seat. The product should not be subjected to unbalanced weights, as it is designed for a proper rest on the foothold (on four legs or on the base). Our company relieves from any responsibility in case of damage caused to fragile floors. Avoid any improper use of the product: do not step on the product, on the footrest or on the armrests. Avoid any movements that could compromise the proper functionality of the product or the safety of the users. Wood and leather, being natural materials, could be easily damaged. Small impurities or imperfections are within quality standard range. Do not expose the product to weather conditions or atmospheric agents, nor to heat sources over 40°C. Also products for outdoor use could be afflicted by atmospheric agents. The product could undergo possible exterior changes due to particular exposure to heat, humidity and saltiness. An appropriate and frequent maintenance and cleaning of the product enhances its durability. The product could change colour and shade, if exposed to direct sunlight. Maintenance has to be carried out by experienced staff. Dispose of the package only after assembling the product, in order to avoid the loss of ironmongery and components. Once the product has been dismantled, the product itself or its components must be given to the public garbage disposal system, according to the legislation in force.