

SEELA AC | S312

Antti Kotilainen | 2022



SEELA AC

Antti Kotilainen | 2022

The SEELA seating family by Antti Kotilainen grows and adds two new proposals in 2025, both suitable for indoor use and the contract and residential markets: a SOFT variant with an upholstered cushion applied to the inner shell and a version with an inner shell covering in black leather. The new proposals join the existing ones, characterized by very light bases on which rests a sinuous polypropylene shell, which in turn continues into the seat without interruptions, accommodating a rounded insert in wood, polypropylene or fabric. Also available in the fully upholstered variant, even more comfortable and elegant, it allows you to play with colors, having fun combining a shell in one color and the seat interior in another.



SEELA AC

Antti Kotilainen | 2022

| S312 4-legged

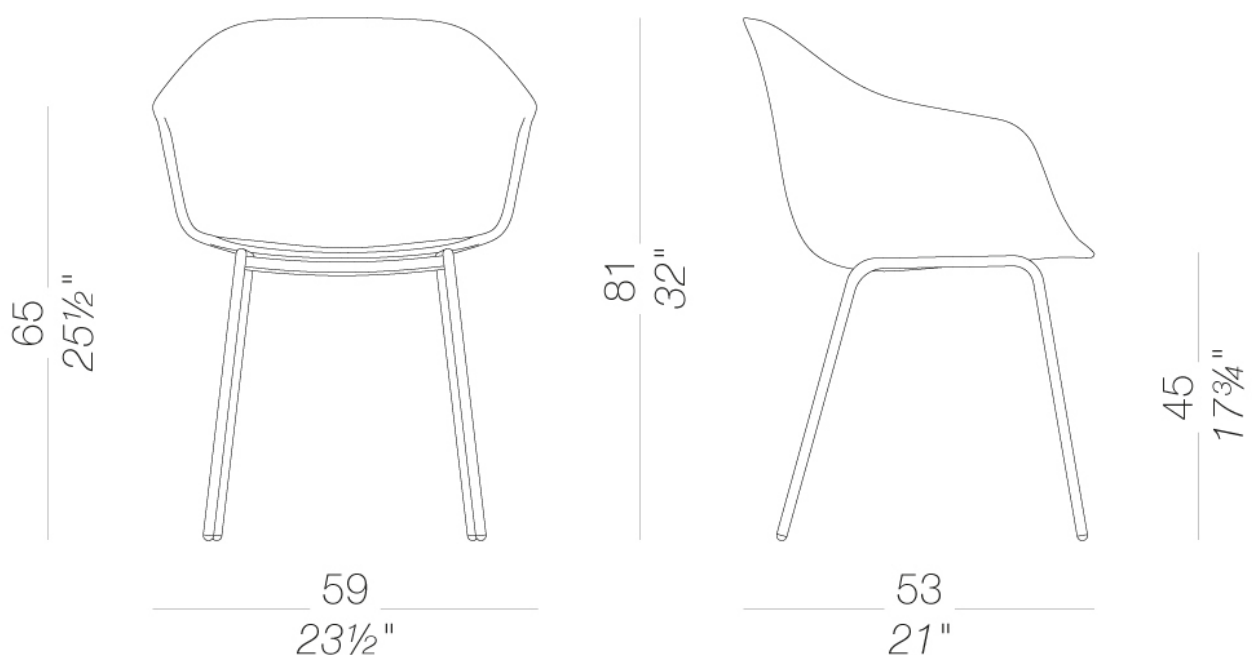
Shell in polypropylene with integrated seamless seatpad in polypropylene, wood or fabric, easily removable with 4 screws and replaceable. A fully upholstered shell without removable seat-pad is also available.

Outer shell in polypropylene. Inner shell in polypropylene, upholstered with fabric.

Also available with a shell entirely upholstered in leather, with a non-removable cushion applied to the seat.

Also available with a polypropylene shell in various colors, with a soft upholstered cushion applied to the inside of the seat.

Base with 4 legs in mat chromed steel or powder coated. Glides in nylon with felt.



SEELA AC | S312

Antti Kotilainen | 2022

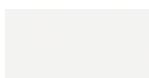
frame



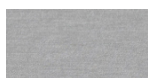
powder coating
pistacchio
1 Colors



powder coating
black
1 Colors



powder coating
white
1 Colors



metal
aluminium
1 Colors



powder coating
perla
1 Colors



powder coating
celeste
1 Colors



powder coating
mattone
1 Colors



powder coating
oliva
1 Colors



powder coating
tortora
1 Colors

shell



plastics
polypropylene
10 Colors



leather
leather
7 Colors

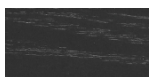
seat-pad



plastics
polypropylene
10 Colors



wood
blanch oak
1 Colors

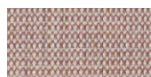


wood
black open pore
1 Colors



leather
leather
7 Colors

upholstery



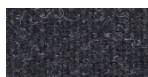
fabric
Canvas 2 - Grade C
45 Colors



fabric
Steelcut Trio 3 -
Grade D
54 Colors



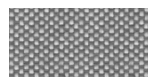
fabric
Remix 3 - Grade C
72 Colors



fabric
Tonica 2 - Grade C
39 Colors



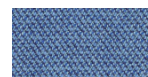
fabric
Medley - Grade A
37 Colors



fabric
Maya - Grade A
43 Colors



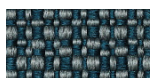
fabric
Jet - Grade A
66 Colors



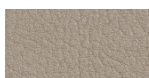
fabric
Capture - Grade B
60 Colors



fabric
Crisp - Grade B
40 Colors



fabric
Iliris - Grade B
34 Colors



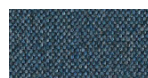
ecoleather
Valencia - Grade B
72 Colors



fabric
Grain - Grade. B
50 Colors



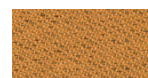
fabric
Re-wool - Grade C
24 Colors



fabric
Main Line Flax -
Grade. B
57 Colors



fabric
Blazer - Grade. C
77 Colors



fabric
Chili - Grade. A
47 Colors

consult the portfolio for the range of colors, fabrics, eco-leather, soft-leather.

use and maintenance instructions

Clean all parts in wood, leather, fabric and metal with a damp cloth or a diluted neutral cleaner. Do not use cleaners with alcohol, bleach, solvent or abrasive products. Any liquid spilled on the product must be wiped up immediately. When lifting or moving the product, hold it on the structure and not under the seat. The product should not be subjected to unbalanced weights, as it is designed for a proper rest on the footstool (on four legs or on the base). Our Company relieves from any responsibility in case of damage caused to fragile floors. Avoid any improper use of the product: do not step on the product, on the footrest or on the armrests. Avoid any movements that could compromise the proper functionality of the product or the safety of the users. Wood and leather, being natural materials, could be easily damaged. Small impurities or imperfections are within quality standard range. Do not expose the product to weather conditions or atmospheric agents, nor to heat sources over 40°C. Also products for outdoor use could be afflicted by atmospheric agents. The product could undergo possible exterior changes due to particular exposure to heat, humidity and saltiness. An appropriate and frequent maintenance and cleaning of the product enhances its durability. The product could change colour and shade, if exposed to direct sunlight. Maintenance has to be carried out by experienced staff. Dispose of the package only after assembling the product, in order to avoid the loss of ironmongery and components. Once the product has been dismantled, the product itself or its components must be given to the public garbage disposal system, according to the legislation in force.

SEELA AC | S312

Antti Kotilainen | 2022

cushion

consult the portfolio for the range of colors, fabrics, eco-leather, soft-leather.

use and maintenance instructions

Clean all parts in wood, leather, fabric and metal with a damp cloth or a diluted neutral cleaner. Do not use cleaners with alcohol, bleach, solvent or abrasive products. Any liquid spill on the product must be wiped up immediately. When lifting or moving the product, hold it on the structure and not under the seat. The product should not be subjected to unbalanced weights, as it is designed for a proper rest on the foothold (on four legs or on the base). Our company relieves from any responsibility in case of damage caused to fragile floors. Avoid any improper use of the product: do not step on the product, on the footrest or on the armrests. Avoid any movements that could compromise the proper functionality of the product or the safety of the users. Wood and leather, being natural materials, could be easily damaged. Small impurities or imperfections are within quality standard range. Do not expose the product to weather conditions or atmospheric agents, nor to heat sources over 40°C. Also products for outdoor use could be afflicted by atmospheric agents. The product could undergo possible exterior changes due to particular exposure to heat, humidity and saltiness. An appropriate and frequent maintenance and cleaning of the product enhances its durability. The product could change colour and shade, if exposed to direct sunlight. Maintenance has to be carried out by experienced staff. Dispose of the package only after assembling the product, in order to avoid the loss of ironmongery and components. Once the product has been dismantled, the product itself or its components must be given to the public garbage disposal system, according to the legislation in force.

fabric
Umber - Grade. B
36 Colors

fabric
Nobel - Grade. C
30 Colors

fabric
Naveli - Grade. C
24 Colors

fabric
Fiocco - Grade. B
34 Colors

fabric
Atrium - Grade. C
16 Colors

fabric
Panama - Grade. A
48 Colors

fabric
Sorrento - Grade. B
22 Colors

fabric
Crisp - Grade. B
40 Colors

fabric
WIS - Grade. B
34 Colors

ecoleather
Valencia - Grade. B
72 Colors

fabric
Grain - Grade. B
130 Colors

fabric
Re-wool - Grade. C
24 Colors

fabric
Main Line Flax - Grade. B
57 Colors

fabric
Blazer - Grade. C
77 Colors

fabric
Chiu - Grade. A
47 Colors

fabric
Crisp - Grade. B
40 Colors

fabric
WIS - Grade. B
34 Colors

ecoleather
Valencia - Grade. B
72 Colors

fabric
Grain - Grade. B
130 Colors

fabric
Re-wool - Grade. C
24 Colors

fabric
Main Line Flax - Grade. B
57 Colors

fabric
Blazer - Grade. C
77 Colors

fabric
Chiu - Grade. A
47 Colors

fabric
Crisp - Grade. B
40 Colors

fabric
WIS - Grade. B
34 Colors

ecoleather
Valencia - Grade. B
72 Colors

fabric
Grain - Grade. B
130 Colors

fabric
Re-wool - Grade. C
24 Colors

fabric
Main Line Flax - Grade. B
57 Colors

fabric
Blazer - Grade. C
77 Colors

fabric
Chiu - Grade. A
47 Colors

fabric
Crisp - Grade. B
40 Colors

fabric
WIS - Grade. B
34 Colors

ecoleather
Valencia - Grade. B
72 Colors

fabric
Grain - Grade. B
130 Colors

fabric
Re-wool - Grade. C
24 Colors

fabric
Main Line Flax - Grade. B
57 Colors

fabric
Blazer - Grade. C
77 Colors

fabric
Chiu - Grade. A
47 Colors

fabric
Crisp - Grade. B
40 Colors

fabric
WIS - Grade. B
34 Colors

ecoleather
Valencia - Grade. B
72 Colors

fabric
Grain - Grade. B
130 Colors

fabric
Re-wool - Grade. C
24 Colors

fabric
Main Line Flax - Grade. B
57 Colors

fabric
Blazer - Grade. C
77 Colors

fabric
Chiu - Grade. A
47 Colors

fabric
Crisp - Grade. B
40 Colors

fabric
WIS - Grade. B
34 Colors

ecoleather
Valencia - Grade. B
72 Colors

fabric
Grain - Grade. B
130 Colors

fabric
Re-wool - Grade. C
24 Colors

fabric
Main Line Flax - Grade. B
57 Colors

fabric
Blazer - Grade. C
77 Colors

fabric
Chiu - Grade. A
47 Colors

fabric
Crisp - Grade. B
40 Colors

fabric
WIS - Grade. B
34 Colors

ecoleather
Valencia - Grade. B
72 Colors

fabric
Grain - Grade. B
130 Colors

fabric
Re-wool - Grade. C
24 Colors

fabric
Main Line Flax - Grade. B
57 Colors

fabric
Blazer - Grade. C
77 Colors

fabric
Chiu - Grade. A
47 Colors

fabric
Crisp - Grade. B
40 Colors

fabric
WIS - Grade. B
34 Colors

ecoleather
Valencia - Grade. B
72 Colors

fabric
Grain - Grade. B
130 Colors

fabric
Re-wool - Grade. C
24 Colors

fabric
Main Line Flax - Grade. B
57 Colors

fabric
Blazer - Grade. C
77 Colors

fabric
Chiu - Grade. A
47 Colors