

Mimic Moth Wallcovering

MOOOI



The Mimic Moth Wallcovering is a 3D wall covering with a soft suede look, inspired by the Mimic Moth's shape and habitat. The wall covering's design comprises embossed Mimic Moths surrounded by their favourite flowers.

Detailing



The Mimic Moth Wallcovering is a 3D wall covering with a soft suede look, inspired by the Mimic Moth's shape and habitat.

Colours

Dodo

Pink



Plaster

Sage

Mimic Moth Wallcovering / Mimic Moth

Product

WIDTH 120cm | 47.2"
HEIGHT 100cm | 39.4"
DEPTH 0.2cm | 0.1"

Packaging

WIDTH 120cm | 47.2"
HEIGHT 5cm | 2"
CUBAGE 0.06m³ | 2.12ft³
LENGTH 100cm | 39.4"
WEIGHT 0.78kg | 1.72lbs

Technical

MATERIAL

3D Textile wallcovering on non-woven backing

COLLECTION

Mooodi Wallcovering Memento Mooodi

UNIT DIMENSIONS

Width 119 cm (46.9"), sold by the linear metre/yard

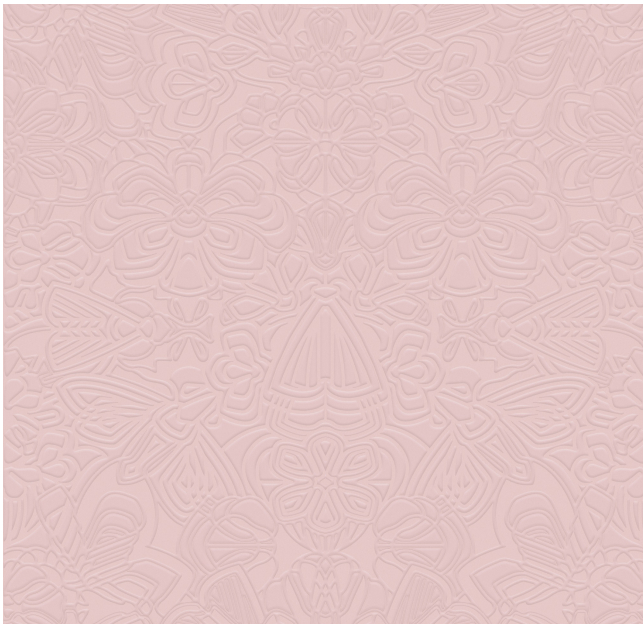
ADHESIVE

Adhesive for non-woven wallcovering like Arte Clearpro or 100% dispersion adhesive

HOW TO PASTE

Paste the wall

REPEAT IMAGE



PATTERN

Mimic Moth

REPEAT TYPE

→← Straight match

LIGHT RESISTANCE

☀️ Good lightfastness

CARE

Spongeable during hanging (dab away damp glue)

HOW TO REMOVE

🔪 Strippable