



Dwarf Rhino Wallcovering

MOOOI | FOR MOOOI WALLCOVERING



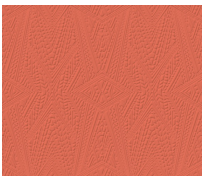
Soft suede 3D wallcovering, based on the unique structure of the ancient skin and the typical grey-brown folds that section the Dwarf Rhino's body, bearing the appearance of a suit of armour.

Detailing

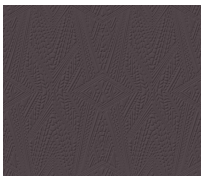


A fusion of artistry and innovation, this Moooi Wallcovering transforms interiors with rich textures, intricate details and nature-inspired motifs.

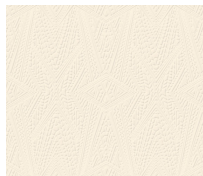
Colours



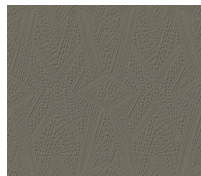
Brick



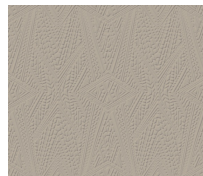
Charcoal



Egg shell



Sage



Sand beige

Dwarf Rhino Wallcovering / Dwarf Rhino

Product

WIDTH 124cm | 48.8"

HEIGHT 100cm | 39.4"

DEPTH 0.2cm | 0.1"

Packaging

WIDTH 124cm | 48.8"

HEIGHT 1cm | 0.4"

CUBAGE 0m³ | 0ft³

LENGTH 1cm | 0.4"

WEIGHT 1kg | 2.2lbs

Technical

MATERIAL

3D textile wallcovering on non-woven backing

COLLECTION

Moooli Wallcovering Extinct Animals

UNIT DIMENSIONS

Width 124 cm (48.8"), sold by the linear metre/yard

ADHESIVE

Adhesive for non-woven wallcovering like Arte Clearpro or 100% dispersion adhesive

HOW TO PASTE

Paste the wall

REPEAT IMAGE



PATTERN

Dwarf Rhino

REPEAT TYPE

→|← Straight match

LIGHT RESISTANCE

☀️ Good lightfastness

CARE

Spongeable during hanging (dab away damp glue)

HOW TO REMOVE

🔪 Strippable