

# MIUNN | S160

Karri Monni | 2011





# MIUNN

Karri Monni | 2011

When minimalism embraces. It involves technology and the 3D processing of a wood sheet. It involves a hand that designs, thinking of itself, of the palm that holds water and sand. The result is the sinuous MIUNN, with its embracing seat and perfect support for the back. Available in a chair or stool version, it comes in different heights. Peacefully, just as it was designed.

Product selected for the Quick Ship program, [download the PDF](#)





# MIUNN

Karri Monni | 2011

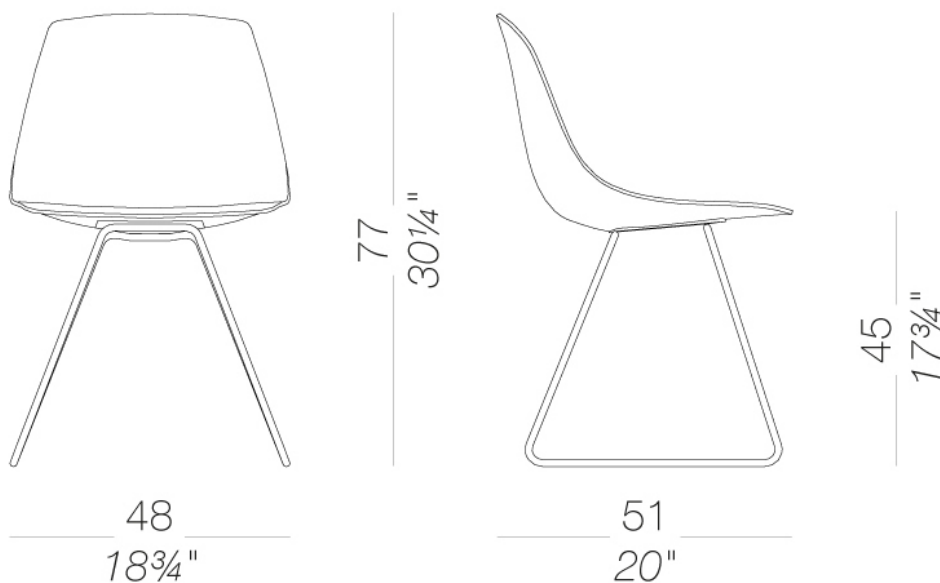


## | S160 slide-frame base

Chair with sled base in mat chromed steel or powder coated. Shell in 3D moulded plywood in several finishes, or in Baydur® fire retardant polyurethane white or black or fully upholstered with fabric or leather. Glides in polythene. It is complemented by a stool in two heights or height adjustable.

TEST EN 1728:2012 AC:2013 6.17 - EN 16139:2013 - L2 extreme

TEST 1 IM - Hallingdal

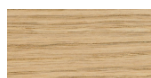




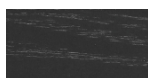
# MIUNN | S160

Karri Monni | 2011

## shell



wood  
blanch oak  
1 Colors



wood  
black open pore  
1 Colors



wood  
oak dark walnut  
1 Colors



plastics  
Baydur®  
2 Colors

## upholstery



fabric  
Main Line Flax -  
Grade. B  
57 Colors



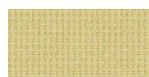
fabric  
Blazer - Grade. C  
77 Colors



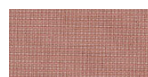
fabric  
Chili - Grade. A  
47 Colors



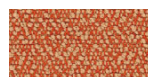
fabric  
Umber - Grade. B  
36 Colors



fabric  
Nobel - Grade. C  
30 Colors



fabric  
Naveli - Grade. C  
24 Colors



fabric  
Fiocco - Grade. B  
34 Colors



fabric  
Atrium - Grade. C  
16 Colors



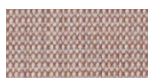
fabric  
Panama - Grade. A  
48 Colors



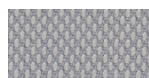
fabric  
Sorrento - Grade. B  
22 Colors



fabric  
Hallingdal 65 - Grade  
Canvas 2 - Grade C  
58 Colors



fabric  
Canvas 2 - Grade C  
45 Colors



fabric  
Steelcut Trio 3 -  
Grade D  
54 Colors



fabric  
Remix 3 - Grade C  
72 Colors



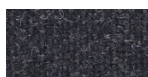
fabric  
Fiord 2 - Grade C  
39 Colors



fabric  
Divina MD - Grade D  
27 Colors



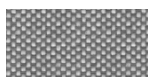
fabric  
Divina Melange 3 -  
Grade D  
38 Colors



fabric  
Tonica 2 - Grade C  
39 Colors



fabric  
Medley - Grade A  
37 Colors



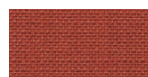
fabric  
Maya - Grade A  
43 Colors



fabric  
Jet - Grade A  
66 Colors



fabric  
Capture - Grade B  
60 Colors



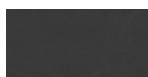
fabric  
Crisp - Grade B  
40 Colors



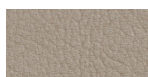
fabric  
Iris - Grade B  
34 Colors



fabric  
Steelcut 3 - Grade D  
40 Colors



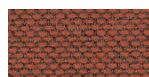
leather  
leather  
7 Colors



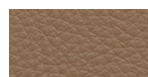
ecoleather  
Valencia - Grade B  
72 Colors



fabric  
Grain - Grade. B  
50 Colors



fabric  
Re-wool - Grade C  
24 Colors

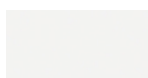


soft-leather  
Soft-leather  
17 Colors

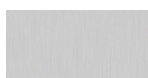
## frame



powder coating  
black  
1 Colors



powder coating  
white  
1 Colors



metal  
mat chromed  
1 Colors



# MIUNN | S160

Karri Monni | 2011

**consult the portfolio for the range of colors, fabrics, eco-leather, soft-leather.**

## **use and maintenance instructions**

Clean all parts in wood, leather, fabric and metal with a damp cloth or a diluted neutral cleaner. Do not use cleaners with alcohol, bleach, solvent or abrasive products. Any liquid spilt on the product must be wiped up immediately. When lifting or moving the product, hold it on the structure and not under the seat. The product should not be subjected to unbalanced weights, as it is designed for a proper rest on the foothold (on four legs or on the base). Our company relieves from any responsibility in case of damage caused to fragile floors. Avoid any improper use of the product: do not step on the product, on the footrest or on the armrests. Avoid any movements that could compromise the proper functionality of the product or the safety of the users. Wood and leather, being natural materials, could be easily damaged. Small impurities or imperfections are within quality standard range. Do not expose the product to weather conditions or atmospheric agents, nor to heat sources over 40°C. Also products for outdoor use could be afflicted by atmospheric agents. The product could undergo possible exterior changes due to particular exposure to heat, humidity and saltiness. An appropriate and frequent maintenance and cleaning of the product enhances its durability. The product could change colour and shade, if exposed to direct sunlight. Maintenance has to be carried out by experienced staff. Dispose of the package only after assembling the product, in order to avoid the loss of ironmongery and components. Once the product has been dismantled, the product itself or its components must be given to the public garbage disposal system, according to the legislation in force.