

MIUNN | S105_65

Karri Monni | 2011



MIUNN

Karri Monni | 2011

When minimalism embraces. It involves technology and the 3D processing of a wood sheet. It involves a hand that designs, thinking of itself, of the palm that holds water and sand. The result is the sinuous MIUNN, with its embracing seat and perfect support for the back. Available in a chair or stool version, it comes in different heights. Peacefully, just as it was designed.

Product selected for the Quick Ship program, [download the PDF](#)



MIUNN

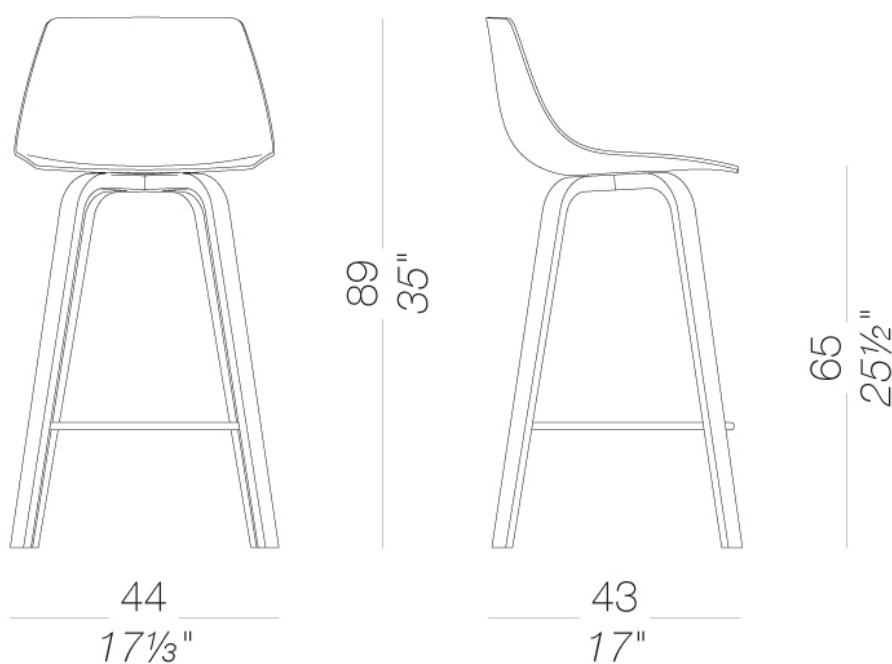
Karri Monni | 2011



| S105_65 counter stool with wood legs H65

Stool h.65 cm. with legs in moulded plywood blached oak or black stained and foot rest in steel rod mat chromed. Seat formed of a single shell using 3D plywood moulding technology in several wood finishes, or in fire-retardant Baydur® polyurethane white or black lacquered or totally upholstered with fabric, leather or eco-leather. Feet in nylon with felt.

TEST 1 IM - Hallingdal



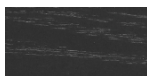
MIUNN | S105_65

Karri Monni | 2011

frame



wood
blanch oak
1 Colors



wood
black open pore
1 Colors

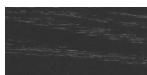
shell



plastics
Baydur®
2 Colors



wood
blanch oak
1 Colors



wood
black open pore
1 Colors



wood
oak dark walnut
1 Colors

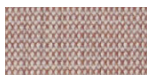


plastics
polypropylene
10 Colors

upholstery



fabric
Hallingdal 65 - Grade C
58 Colors



fabric
Canvas 2 - Grade C
45 Colors



fabric
Steelcut Trio 3 - Grade D
54 Colors



fabric
Remix 3 - Grade C
72 Colors



fabric
Fiord 2 - Grade C
39 Colors



fabric
Divina MD - Grade D
27 Colors



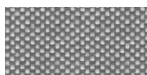
fabric
Divina Melange 3 - Grade D
38 Colors



fabric
Tonica 2 - Grade C
39 Colors



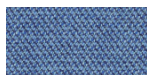
fabric
Medley - Grade A
37 Colors



fabric
Maya - Grade A
43 Colors



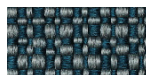
fabric
Jet - Grade A
66 Colors



fabric
Capture - Grade B
60 Colors



fabric
Crisp - Grade B
40 Colors



fabric
Iliris - Grade B
34 Colors



fabric
Steelcut 3 - Grade D
40 Colors



leather
leather
7 Colors



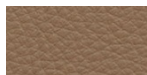
ecoleather
Valencia - Grade B
72 Colors



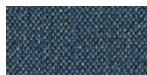
fabric
Grain - Grade B
50 Colors



fabric
Re-wool - Grade C
24 Colors



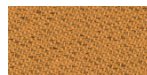
soft-leather
Soft-leather
17 Colors



fabric
Main Line Flax - Grade B
57 Colors



fabric
Blazer - Grade C
77 Colors



fabric
Chili - Grade A
47 Colors



fabric
Umber - Grade B
36 Colors



fabric
Nobel - Grade C
30 Colors



fabric
Naveli - Grade C
24 Colors



fabric
Fiocco - Grade B
34 Colors



fabric
Atrium - Grade C
16 Colors



fabric
Panama - Grade A
48 Colors



fabric
Sorrento - Grade B
22 Colors

MIUNN | S105_65

Karri Monni | 2011

consult the portfolio for the range of colors, fabrics, eco-leather, soft-leather.

use and maintenance instructions

Clean all parts in wood, leather, fabric and metal with a damp cloth or a diluted neutral cleaner. Do not use cleaners with alcohol, bleach, solvent or abrasive products. Any liquid spilt on the product must be wiped up immediately. When lifting or moving the product, hold it on the structure and not under the seat. The product should not be subjected to unbalanced weights, as it is designed for a proper rest on the foothold (on four legs or on the base). Our company relieves from any responsibility in case of damage caused to fragile floors. Avoid any improper use of the product: do not step on the product, on the footrest or on the armrests. Avoid any movements that could compromise the proper functionality of the product or the safety of the users. Wood and leather, being natural materials, could be easily damaged. Small impurities or imperfections are within quality standard range. Do not expose the product to weather conditions or atmospheric agents, nor to heat sources over 40°C. Also products for outdoor use could be afflicted by atmospheric agents. The product could undergo possible exterior changes due to particular exposure to heat, humidity and saltiness. An appropriate and frequent maintenance and cleaning of the product enhances its durability. The product could change colour and shade, if exposed to direct sunlight. Maintenance has to be carried out by experienced staff. Dispose of the package only after assembling the product, in order to avoid the loss of ironmongery and components. Once the product has been dismantled, the product itself or its components must be given to the public garbage disposal system, according to the legislation in force.