

KISAT | S410

Hee Welling | 2022



KISAT

Hee Welling | 2022

Simple, like walking into school in the morning and seeing it there waiting for us, together with our classmates. Clean, like the fresh air that surprises us in the kitchen on a day in spring. And joyful, like getting together on a Sunday, around a table at a restaurant. KISAT, the new chair designed by Hee Welling, focuses on a familiar aesthetic look and the natural versatility of a design project created to meet the most diverse needs in the contract and residential sectors. This product with emotional appeal amazes with its unexpected graphic detail: the die-cast aluminium frame surrounds the back and then descends, like a continuous line, to become the base. Available in various colours, combined with an oak wood or upholstered fabric back and seat, it creates an interesting yet subtle visual effect. Stackable, functional, comfortable and always different, KISAT is ideal for furnishing public spaces such as canteens, conference halls, restaurants or coffee bars in company buildings. But also in the kitchen, and wherever we are together, now as in the past.

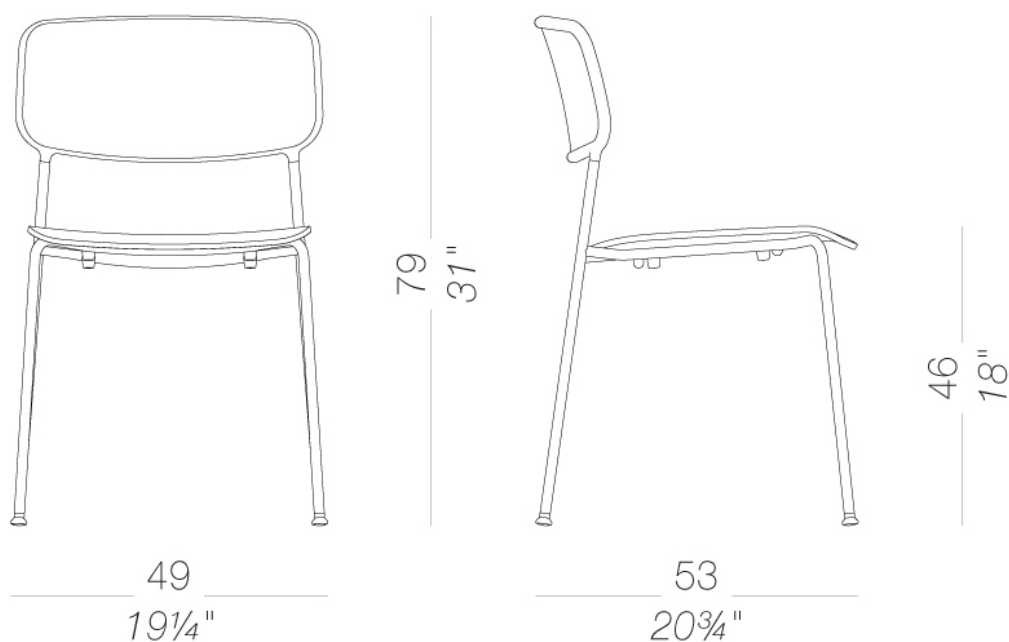


KISAT

Hee Welling | 2022

| S410 4 legs stackable

Stackable chair with 4 legs in powder coated steel. Seat and backrest in plywood in several finishes or upholstered in fabric. The backrest has a diecast aluminium frame powder coated. Feet in nylon with felt.



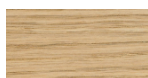
KISAT | S410

Hee Welling | 2022

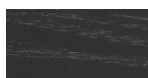
seat/back



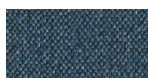
wood
lacquered open pore
6 Colors



wood
blanched oak
1 Colors



wood
black open pore
1 Colors



fabric
Main Line Flax -
Grade. B
57 Colors



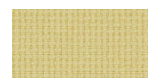
fabric
Blazer - Grade. C
77 Colors



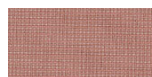
fabric
Chili - Grade. A
47 Colors



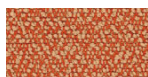
fabric
Umber - Grade. B
36 Colors



fabric
Nobel - Grade. C
30 Colors



fabric
Naveli - Grade. C
24 Colors



fabric
Fiocco - Grade. B
34 Colors



fabric
Atrium - Grade. C
16 Colors



fabric
Panama - Grade. A
48 Colors



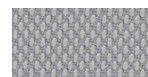
fabric
Sorrento - Grade. B
22 Colors



fabric
Hallingdal 65 - Grade
C
58 Colors



fabric
Canvas 2 - Grade C
45 Colors



fabric
Steelcut Trio 3 -
Grade D
54 Colors



fabric
Remix 3 - Grade C
72 Colors



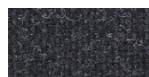
fabric
Fiord 2 - Grade C
39 Colors



fabric
Divina MD - Grade D
27 Colors



fabric
Divina Melange 3 -
Grade D
38 Colors



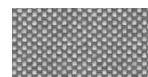
fabric
Tonica 2 - Grade C
39 Colors



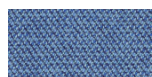
fabric
Medley - Grade A
37 Colors



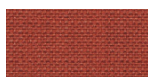
fabric
Jet - Grade A
66 Colors



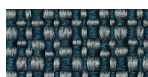
fabric
Maya - Grade A
43 Colors



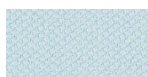
fabric
Capture - Grade B
60 Colors



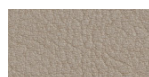
fabric
Crisp - Grade B
40 Colors



fabric
Iiris - Grade B
34 Colors



fabric
Steelcut 3 - Grade D
40 Colors



ecoleather
Valencia - Grade B
72 Colors



fabric
Grain - Grade. B
50 Colors

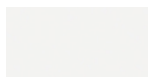


fabric
Re-wool - Grade C
24 Colors

frame



powder coating
pistacchio
1 Colors



powder coating
white
1 Colors



powder coating
black
1 Colors



powder coating
perla
1 Colors



powder coating
celeste
1 Colors



powder coating
mattone
1 Colors



powder coating
oliva
1 Colors



powder coating
tortora
1 Colors

consult the portfolio for the range of colors, fabrics, eco-leather, soft-leather.

use and maintenance instructions

Clean all parts in wood, leather, fabric and metal with a damp cloth or a diluted neutral cleaner. Do not use cleaners with alcohol, bleach, solvent or abrasive products. Any liquid spilt on the product must be wiped up immediately. When lifting or moving the product, hold it on the structure and not under the seat. The product should not be subjected to unbalanced weights, as it is designed for a proper rest on the foothold (on four legs or on the base). Our company relieves from any responsibility in case of damage caused to fragile floors. Avoid any improper use of the product: do not step on the product, on the footrest or on the armrests. Avoid any movements that could compromise the proper functionality of the product or the safety of the users. Wood and leather, being natural materials, could be easily damaged. Small impurities or imperfections are within quality standard range. Do not expose the product to weather conditions or atmospheric agents, nor to heat sources over 40°C. Also products for outdoor use could be afflicted by atmospheric agents. The product could undergo possible exterior changes due to particular exposure to heat, humidity and saltiness. An appropriate and frequent maintenance and cleaning of the product enhances its durability. The product could change colour and shade, if exposed to direct sunlight. Maintenance has to be carried out by experienced staff. Dispose of the package only after assembling the product, in order to avoid the loss of ironmongery and components. Once the product has been dismantled, the product itself or its components must be given to the public garbage disposal system, according to the legislation in force.