

JEY EP383 | outdoor high table ☁️☀️

Francesco Rota | 2016





Francesco Rota | 2016

It moves by itself, it is the sky and freedom. Pure outdoor essence. The JEY table-sculpture moves easily between a sofa, an armchair or another table. A cement or marble base and a tubular column support the tabletop, available in various geometric shapes. Its handle ensures an elegant and easy grip. It can be plucked like a flower.

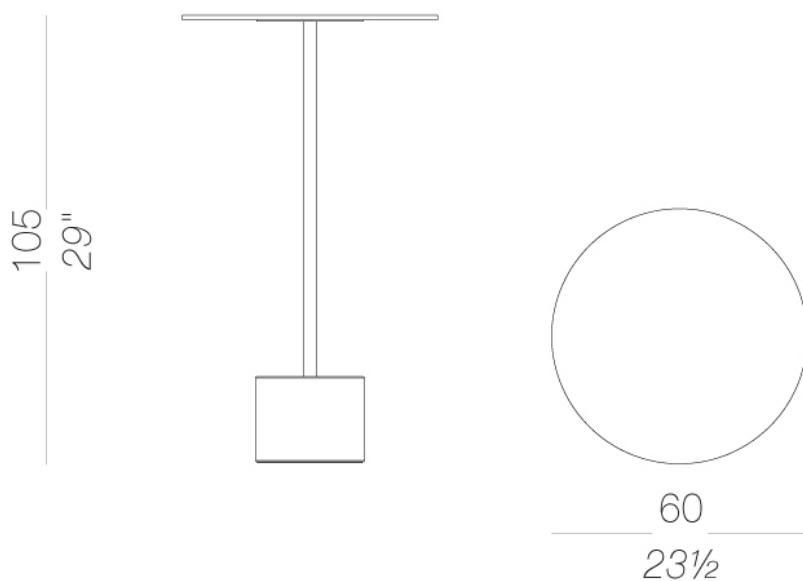


JEY

Francesco Rota | 2016

EP383 | outdoor high table high table H105 with marble or concrete base ☁️

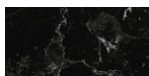
Occasional outdoor table with white Carrara marble base or black Marquinia or in concrete. Stem in stainless steel 304 powder coated polyester. Rubber glides under the base. Top in HPL Fenix® 10 mm.



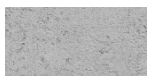
JEY EP383 | outdoor high table ☁️

Francesco Rota | 2016

base

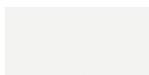


marble
marble
2 Colors



concrete
concrete
1 Colors

frame

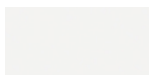


powder coating
white
1 Colors



powder coating
black
1 Colors

top



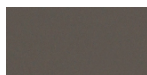
HPL 10 mm
white HPL fenix
1 Colors



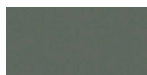
HPL 10 mm
black HPL fenix
1 Colors



HPL 10 mm
HPL fenix rosso
Jaipur
1 Colors



HPL 10 mm
HPL fenix grigio
Londra
1 Colors



HPL 10 mm
HPL fenix comodo
1 Colors

consult the portfolio for the range of colors, fabrics, eco-leather, soft-leather.

use and maintenance instructions

Clean all parts in wood, leather, fabric and metal with a damp cloth or a diluted neutral cleaner. Do not use cleaners with alcohol, bleach, solvent or abrasive products. Any liquid spilt on the product must be wiped up immediately. When lifting or moving the product, hold it on the structure and not under the seat. The product should not be subjected to unbalanced weights, as it is designed for a proper rest on the foothold (on four legs or on the base). Our company relieves from any responsibility in case of damage caused to fragile floors. Avoid any improper use of the product: do not step on the product, on the footrest or on the armrests. Avoid any movements that could compromise the proper functionality of the product or the safety of the users. Wood and leather, being natural materials, could be easily damaged. Small impurities or imperfections are within quality standard range. Do not expose the product to weather conditions or atmospheric agents, nor to heat sources over 40°C. Also products for outdoor use could be afflicted by atmospheric agents. The product could undergo possible exterior changes due to particular exposure to heat, humidity and saltiness. An appropriate and frequent maintenance and cleaning of the product enhances its durability. The product could change colour and shade, if exposed to direct sunlight. Maintenance has to be carried out by experienced staff. Dispose of the package only after assembling the product, in order to avoid the loss of ironmongery and components. Once the product has been dismantled, the product itself or its components must be given to the public garbage disposal system, according to the legislation in force.