

# HAWI | S426

Mario Ferrarini | 2024



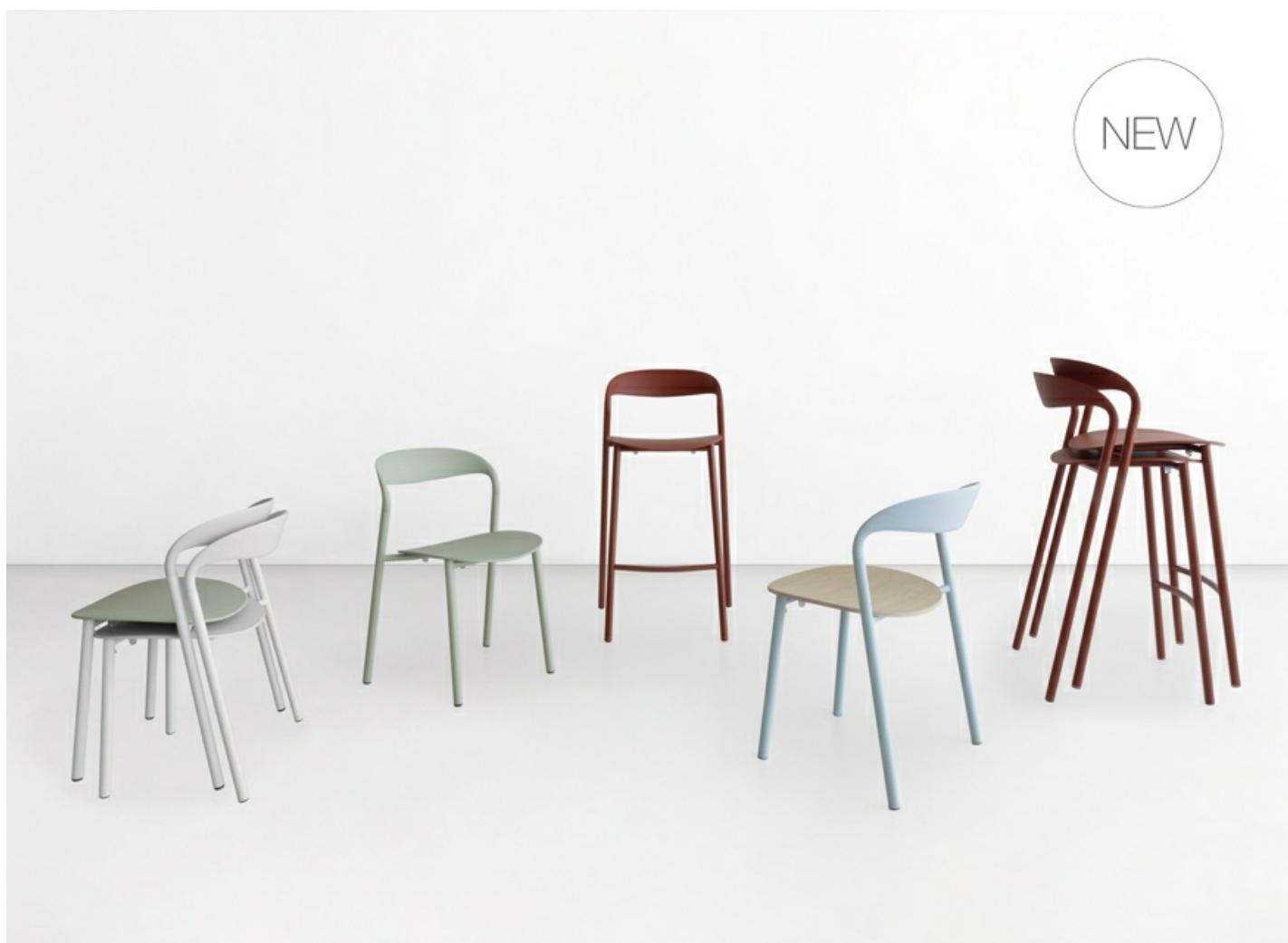
# HAWI

Mario Ferrarini | 2024

The collaboration between Lapalma and Mario Ferrarini continues with favorable winds, as demonstrated by the expansion of the HAWI collection, first launched at the Salone del Mobile 2024.

Characterized by a timeless and essential aesthetic, in line with the other offerings in the Lapalma catalog, HAWI introduces an intriguing twist through the vibrant contrast between the solidity of the frame and the graceful backrest, which, while seamlessly integrated, becomes lighter in its design.

Presented in 2024 as a chair, stackable and extremely versatile, the collection expands in 2025 with the addition of the stool, available in two heights.

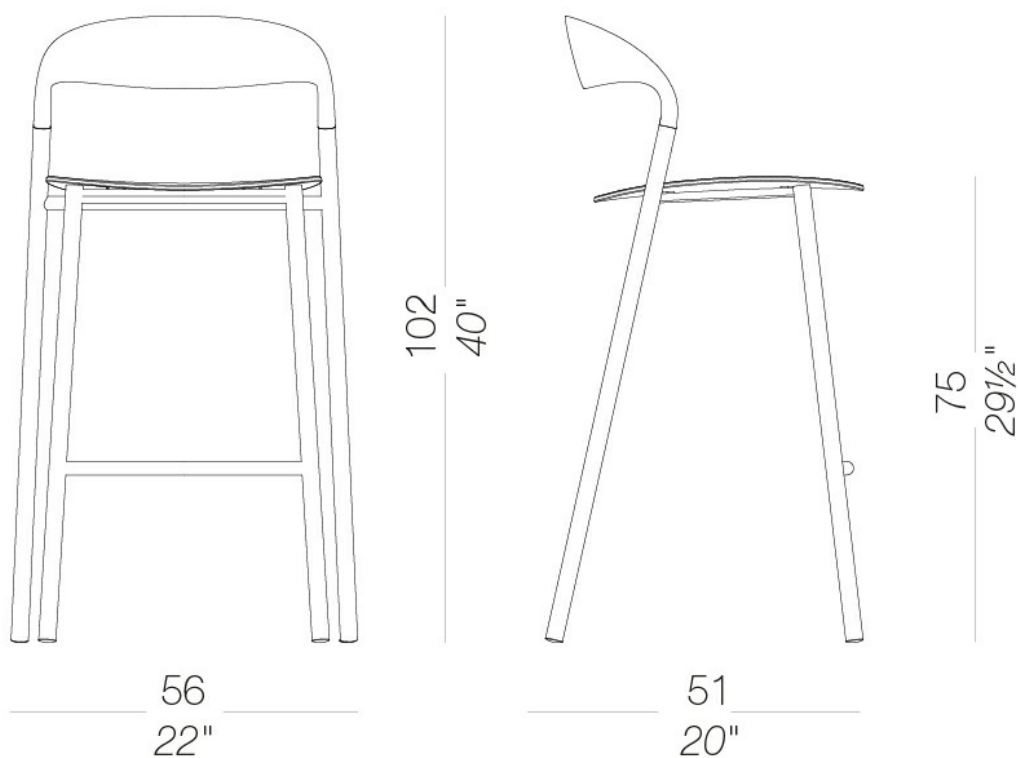


# HAWI

Mario Ferrarini | 2024

## | S426 bar stool 4 metal legs H75

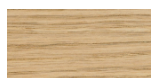
Stool with steel base powder coated. Seat and backrest in polypropylene in several finishes. The seat is also available upholstered or in plywood in different finishes. Glides in nylon with felt.



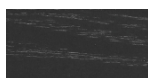
# HAWI | S426

Mario Ferrarini | 2024

## seat



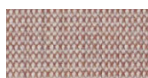
wood  
blanch oak  
1 Colors



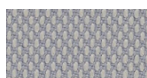
wood  
black open pore  
1 Colors



fabric  
Hallingdal 65 - Grade C  
58 Colors



fabric  
Canvas 2 - Grade C  
45 Colors



fabric  
Steelcut Trio 3 -  
Grade D  
54 Colors



fabric  
Remix 3 - Grade C  
72 Colors



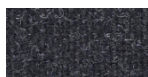
fabric  
Fiord 2 - Grade C  
39 Colors



fabric  
Divina MD - Grade D  
27 Colors



fabric  
Divina Melange 3 -  
Grade D  
38 Colors



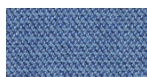
fabric  
Tonica 2 - Grade C  
39 Colors



fabric  
Medley - Grade A  
37 Colors



fabric  
Maya - Grade A  
43 Colors



fabric  
Capture - Grade B  
60 Colors



fabric  
Crisp - Grade B  
40 Colors



fabric  
Ilris - Grade B  
34 Colors



fabric  
Steelcut 3 - Grade D  
40 Colors



ecoleather  
Valencia - Grade B  
72 Colors



fabric  
Grain - Grade. B  
50 Colors



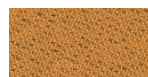
fabric  
Re-wool - Grade C  
24 Colors



fabric  
Main Line Flax -  
Grade. B  
57 Colors



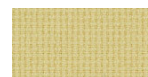
fabric  
Blazer - Grade. C  
77 Colors



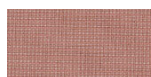
fabric  
Chili - Grade. A  
47 Colors



fabric  
Umber - Grade. B  
36 Colors



fabric  
Nobel - Grade. C  
30 Colors



fabric  
Naveli - Grade. C  
24 Colors



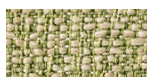
fabric  
Fiocco - Grade. B  
34 Colors



fabric  
Atrium - Grade. C  
16 Colors



fabric  
Panama - Grade. A  
48 Colors



fabric  
Sorrento - Grade. B  
22 Colors

## seat/back



plastics  
polypropylene  
mattone  
1 Colors



plastics  
polypropylene  
celeste  
1 Colors



plastics  
polypropylene perla  
1 Colors



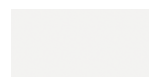
plastics  
polypropylene  
tortora  
1 Colors



plastics  
polypropylene  
pistacchio  
1 Colors



plastics  
polypropylene oliva  
1 Colors



plastics  
polypropylene bianco  
1 Colors



plastics  
polypropylene nero  
1 Colors

## frame



powder coating  
mattone  
1 Colors



powder coating  
celeste  
1 Colors



powder coating  
perla  
1 Colors



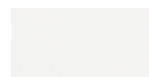
powder coating  
tortora  
1 Colors



powder coating  
pistacchio  
1 Colors



powder coating  
oliva  
1 Colors



powder coating  
white  
1 Colors



powder coating  
black  
1 Colors

# HAWI | S426

Mario Ferrarini | 2024

**consult the portfolio for the range of colors, fabrics, eco-leather, soft-leather.**

## **use and maintenance instructions**

Clean all parts in wood, leather, fabric and metal with a damp cloth or a diluted neutral cleaner. Do not use cleaners with alcohol, bleach, solvent or abrasive products. Any liquid spilt on the product must be wiped up immediately. When lifting or moving the product, hold it on the structure and not under the seat. The product should not be subjected to unbalanced weights, as it is designed for a proper rest on the foothold (on four legs or on the base). Our company relieves from any responsibility in case of damage caused to fragile floors. Avoid any improper use of the product: do not step on the product, on the footrest or on the armrests. Avoid any movements that could compromise the proper functionality of the product or the safety of the users. Wood and leather, being natural materials, could be easily damaged. Small impurities or imperfections are within quality standard range. Do not expose the product to weather conditions or atmospheric agents, nor to heat sources over 40°C. Also products for outdoor use could be afflicted by atmospheric agents. The product could undergo possible exterior changes due to particular exposure to heat, humidity and saltiness. An appropriate and frequent maintenance and cleaning of the product enhances its durability. The product could change colour and shade, if exposed to direct sunlight. Maintenance has to be carried out by experienced staff. Dispose of the package only after assembling the product, in order to avoid the loss of ironmongery and components. Once the product has been dismantled, the product itself or its components must be given to the public garbage disposal system, according to the legislation in force.