

GLOVE | S475

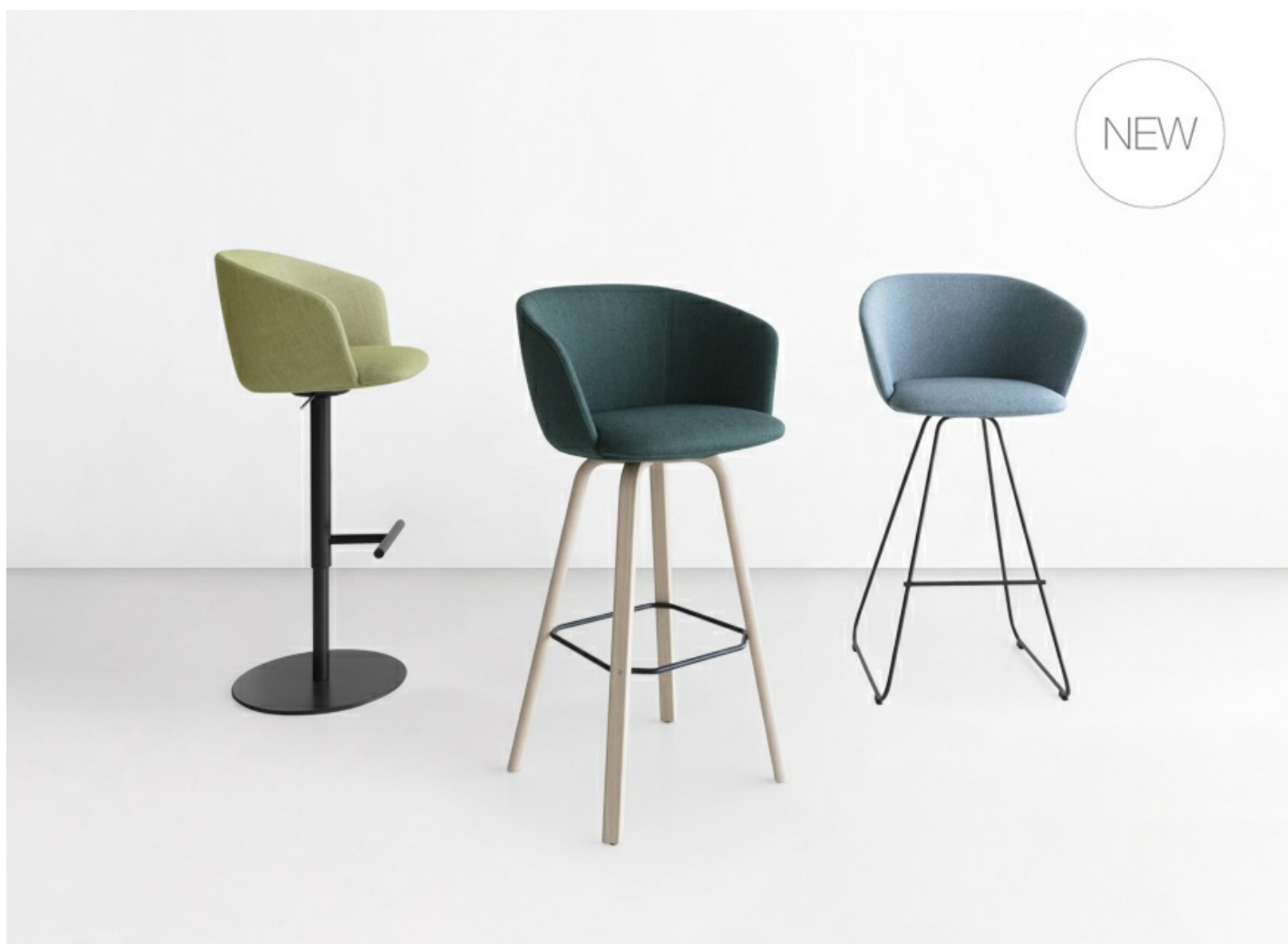
Francesco Rota | 2022



GLOVE

Francesco Rota | 2022

"You wear it like a glove, it fits you like a glove." Every time we read these words, we knew what a wonderful feeling characters were experiencing. Whether it was a dress, a house, a love story, that experience was perfect, the body and thoughts moved with absolute naturalness and elegance, and life flowed happily. So when Francesco Rota thought of a name for his new stool, he had no doubts and named it GLOVE. Same pleasant comfort in the wide seat. Same enveloping profile. And above all, same ease in assembling and recycling each element. And given the tradition, we throw down a gauntlet to find a more beautiful solution for every moment of relaxation.

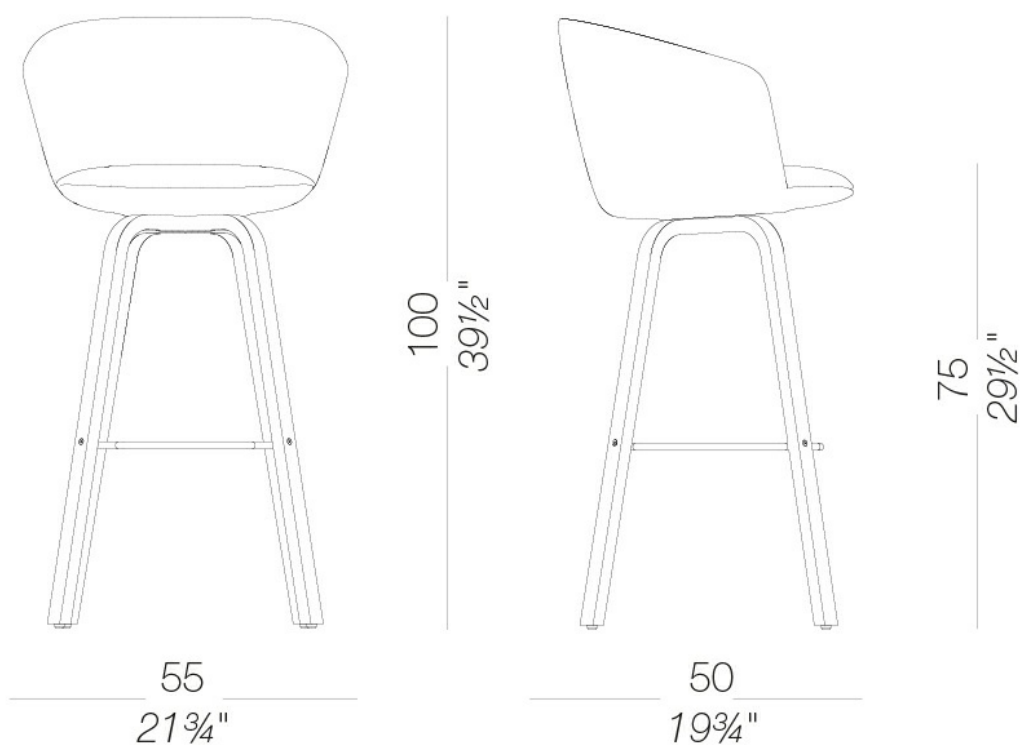


GLOVE

Francesco Rota | 2022

| S475 bar stool with wood legs H75

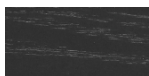
Stool with legs in moulded plywood blanché oak or black stained and foot rest in steel rod mat chromed. Shell in rigid polyurethane upholstered with injected polyurethane fire retardant foam and covered with fabric, ecoleather or leather without any glue. Feet in nylon with insert in felt.



GLOVE | S475

Francesco Rota | 2022

frame



wood
black open pore
1 Colors



wood
blanch oak
1 Colors

upholstery



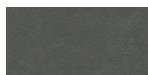
fabric
Re-wool - Grade C
24 Colors



fabric
Grain - Grade B
50 Colors



ecoleather
Valencia - Grade B
72 Colors



soft-leather
soft-leather
7 Colors



fabric
Steelcut Trio 3 -
Grade D
54 Colors



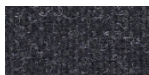
fabric
Steelcut 3 - Grade D
40 Colors



fabric
Divina MD - Grade D
27 Colors



fabric
Divina Melange 3 -
Grade D
38 Colors



fabric
Tonica 2 - Grade C
39 Colors



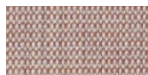
fabric
Remix 3 - Grade C
72 Colors



fabric
Hallingdal 65 - Grade
C
58 Colors



fabric
Fiord 2 - Grade C
39 Colors



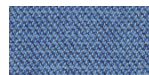
fabric
Canvas 2 - Grade C
45 Colors



fabric
Iliris - Grade B
34 Colors



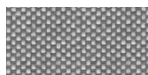
fabric
Crisp - Grade B
40 Colors



fabric
Capture - Grade B
60 Colors



fabric
Medley - Grade A
37 Colors



fabric
Maya - Grade A
43 Colors



fabric
Sorrento - Grade. B
22 Colors



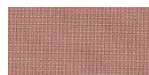
fabric
Panama - Grade. A
48 Colors



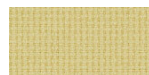
fabric
Atrium - Grade. C
16 Colors



fabric
Fiocco - Grade. B
34 Colors



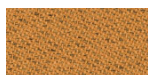
fabric
Naveli - Grade. C
24 Colors



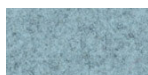
fabric
Nobel - Grade. C
30 Colors



fabric
Umber - Grade. B
36 Colors



fabric
Chili - Grade. A
47 Colors



fabric
Blazer - Grade. C
77 Colors



fabric
Main Line Flax -
Grade. B
57 Colors

consult the portfolio for the range of colors, fabrics, eco-leather, soft-leather.

use and maintenance instructions

Clean all parts in wood, leather, fabric and metal with a damp cloth or a diluted neutral cleaner. Do not use cleaners with alcohol, bleach, solvent or abrasive products. Any liquid spilt on the product must be wiped up immediately. When lifting or moving the product, hold it on the structure and not under the seat. The product should not be subjected to unbalanced weights, as it is designed for a proper rest on the foothold (on four legs or on the base). Our company relieves from any responsibility in case of damage caused to fragile floors. Avoid any improper use of the product: do not step on the product, on the footrest or on the armrests. Avoid any movements that could compromise the proper functionality of the product or the safety of the users. Wood and leather, being natural materials, could be easily damaged. Small impurities or imperfections are within quality standard range. Do not expose the product to weather conditions or atmospheric agents, nor to heat sources over 40°C. Also products for outdoor use could be afflicted by atmospheric agents. The product could undergo possible exterior changes due to particular exposure to heat, humidity and saltiness. An appropriate and frequent maintenance and cleaning of the product enhances its durability. The product could change colour and shade, if exposed to direct sunlight. Maintenance has to be carried out by experienced staff. Dispose of the package only after assembling the product, in order to avoid the loss of ironmongery and components. Once the product has been dismantled, the product itself or its components must be given to the public garbage disposal system, according to the legislation in force.