

# ADD SYSTEM

Francesco Rota | 2016

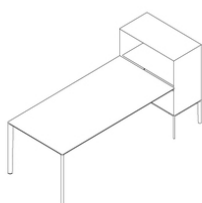


# ADD SYSTEM

Francesco Rota | 2016

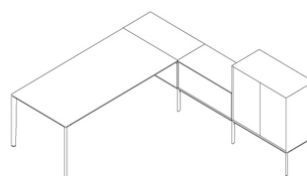
To create a large collection, adding further elements is not enough. A concept is required that smoothly introduces each element. ADD SYSTEM follows this concept, combining ADD, ADD T and ADD S modular collections in a single furnishing philosophy. Consistent and versatile, the various elements complement each other, meeting all the needs of a modern office. With its variety of materials, colours and dimensions, ADD SYSTEM achieves an entirely Italian goal: to customise industrial production.





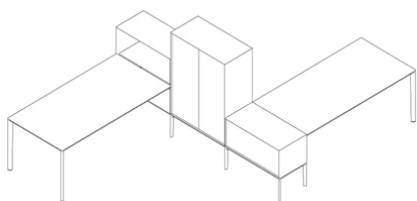
L\_shape

---



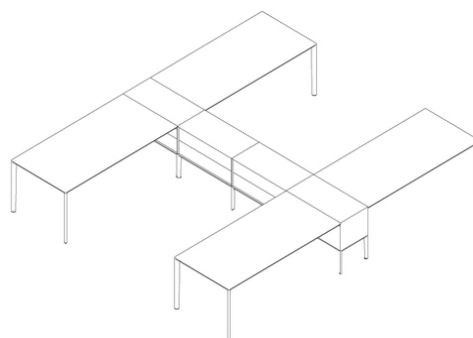
L\_shape

---



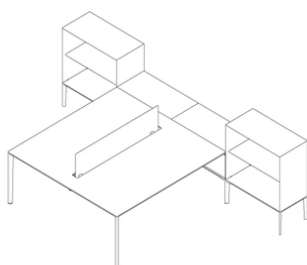
S\_shape

---



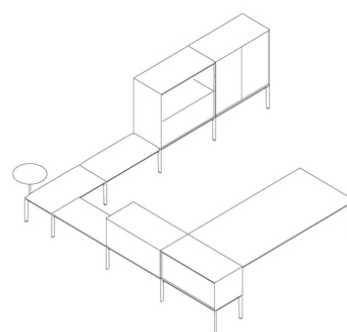
H\_shape

---



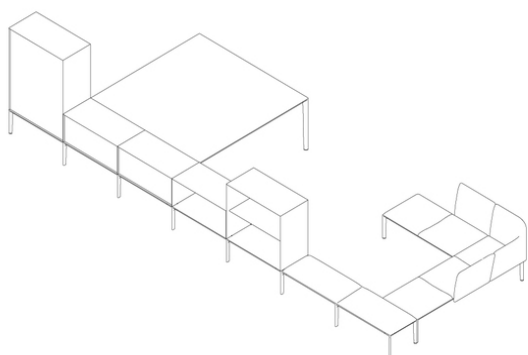
T\_shape

---

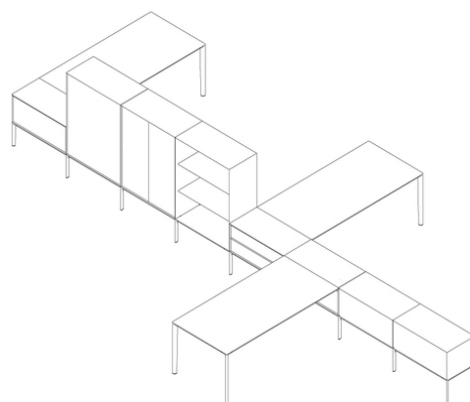


U\_shape — executive

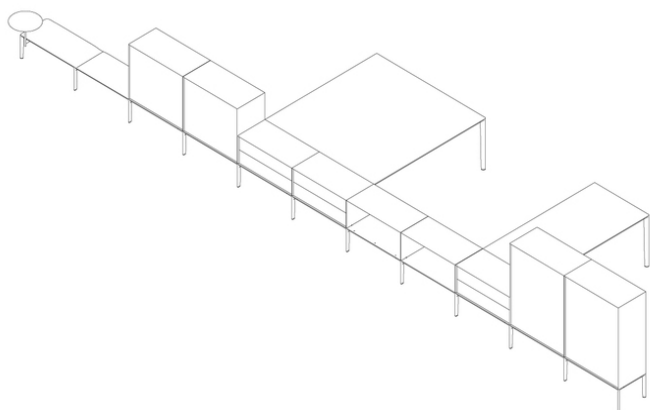
---



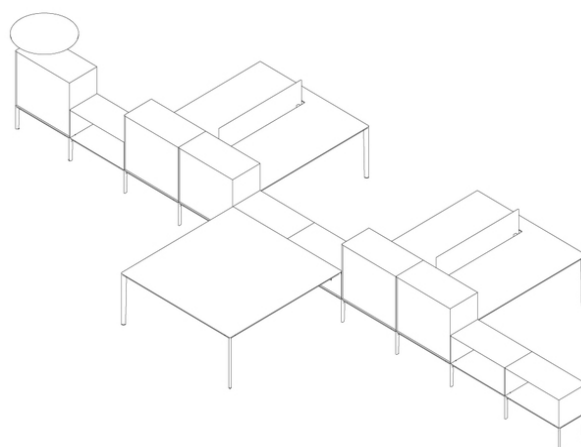
Meeting



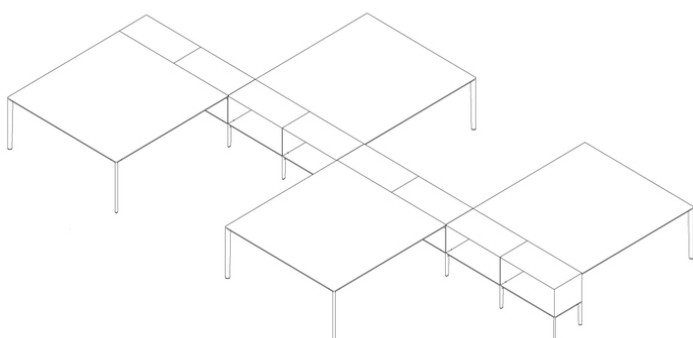
Asymmetrical workstation 1



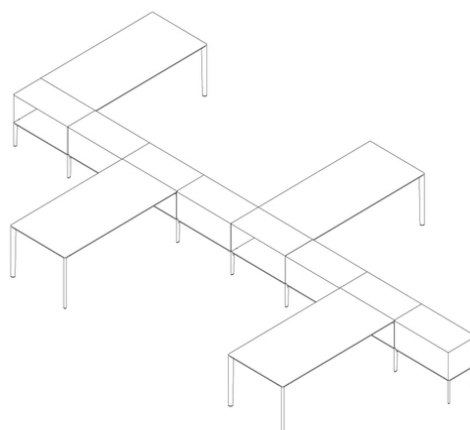
Asymmetrical workstation 2



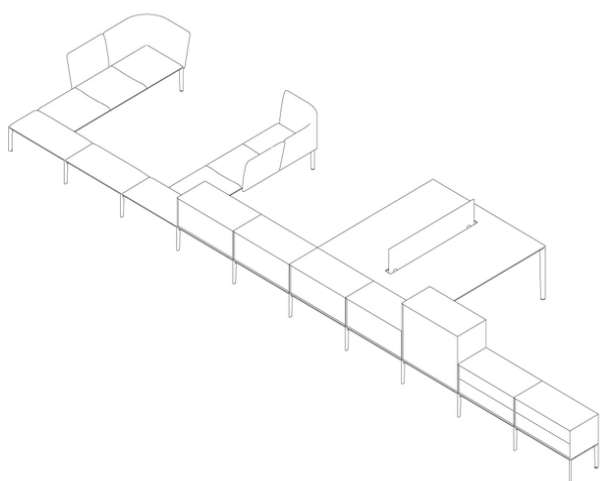
Asymmetrical workstation 3



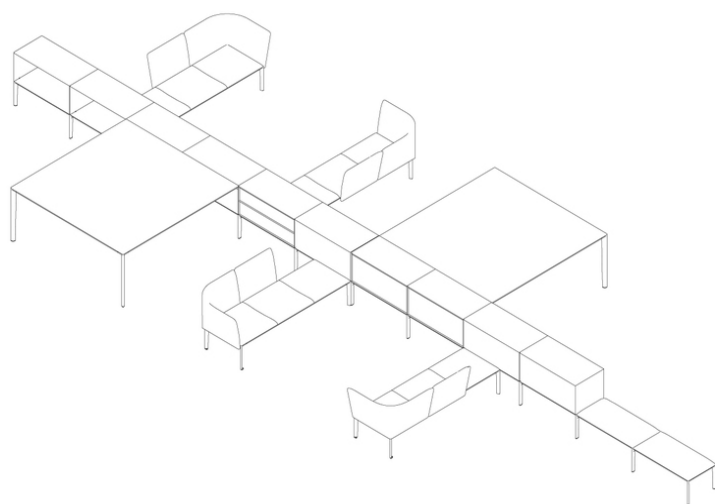
Symmetrical workstation — square



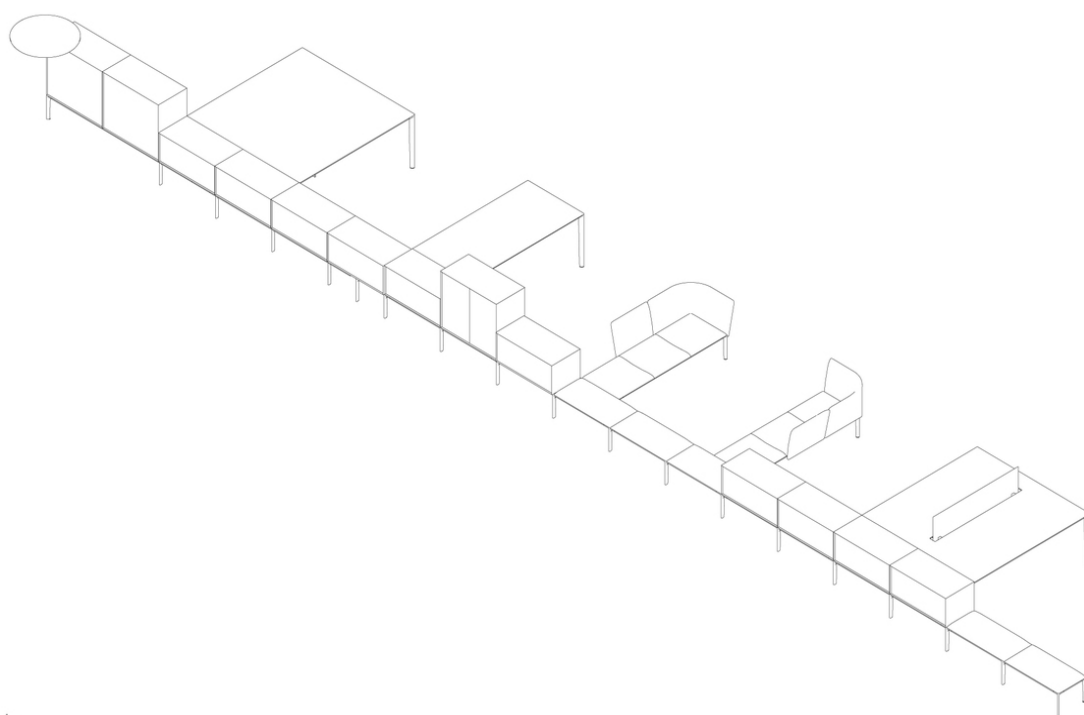
Symmetrical workstation — rectangular



Complex office — small



Complex office symmetrical — medium



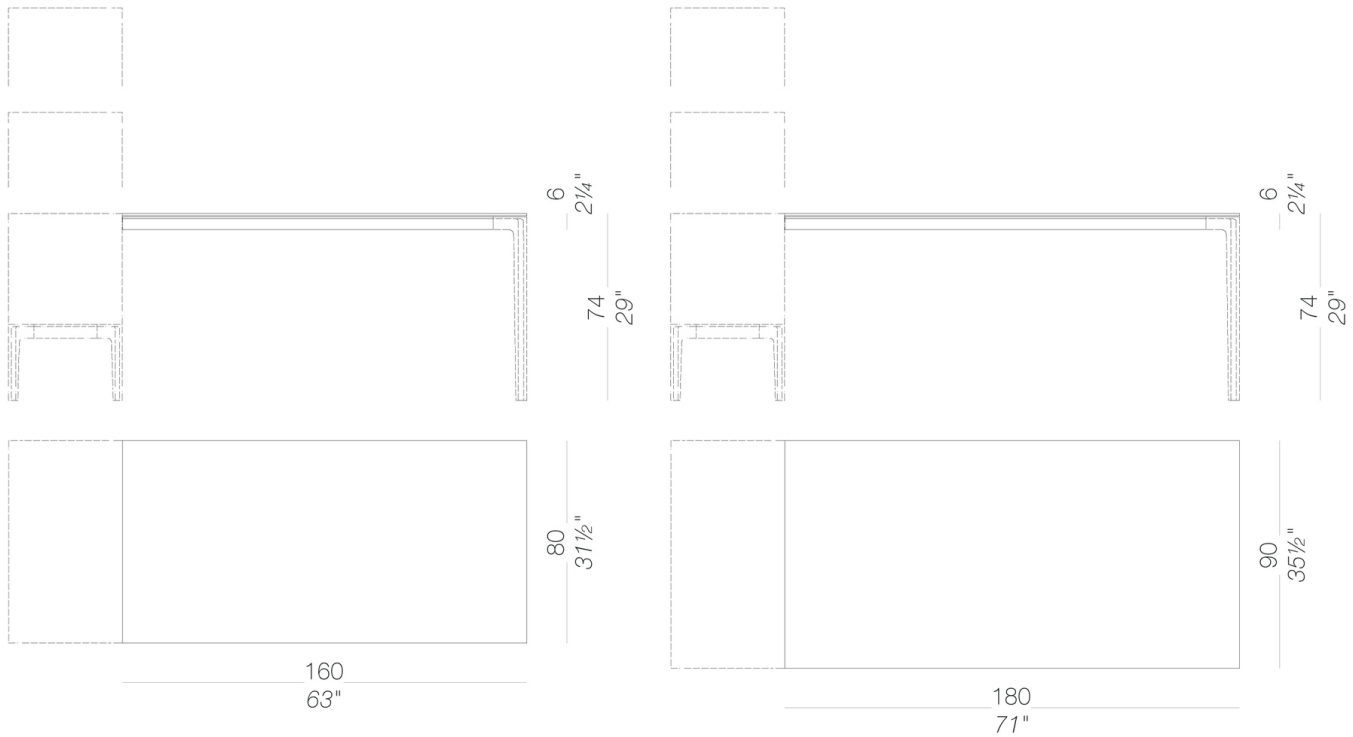
Complex office — big

# ADD SYSTEM

Francesco Rota | 2016

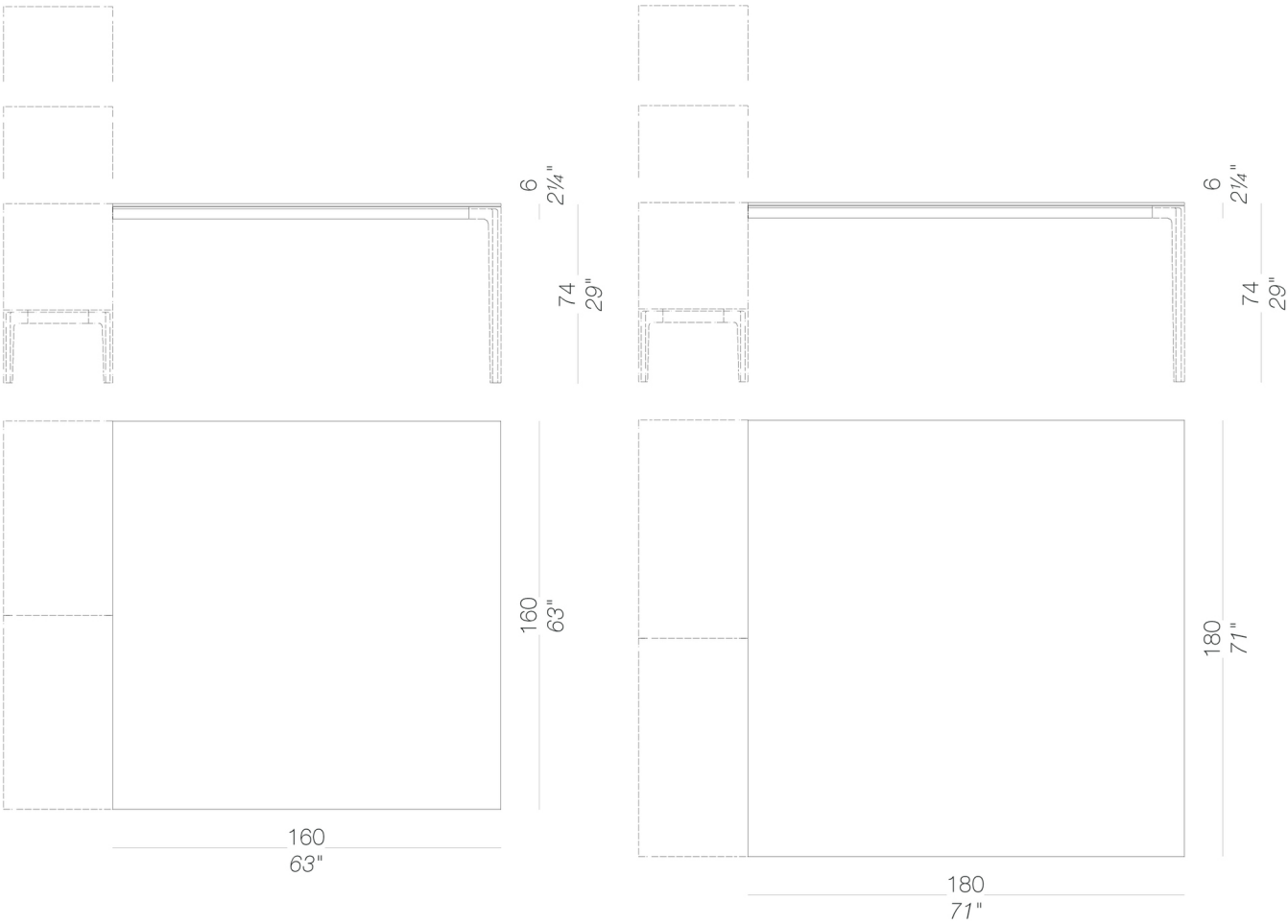
Modular system of ADD T tables linked with ADD S storage units, which offer several furniture solutions for the office. Frame in aluminium with tops in HPL Fenix®, or in plywood blanché oak veneered or black open pore. Storage units in powder coated metal, with shelves, drawers, backs and doors in several finishes. ADD SYSTEM can be combined with the seating system ADD.

## tops



# ADD SYSTEM

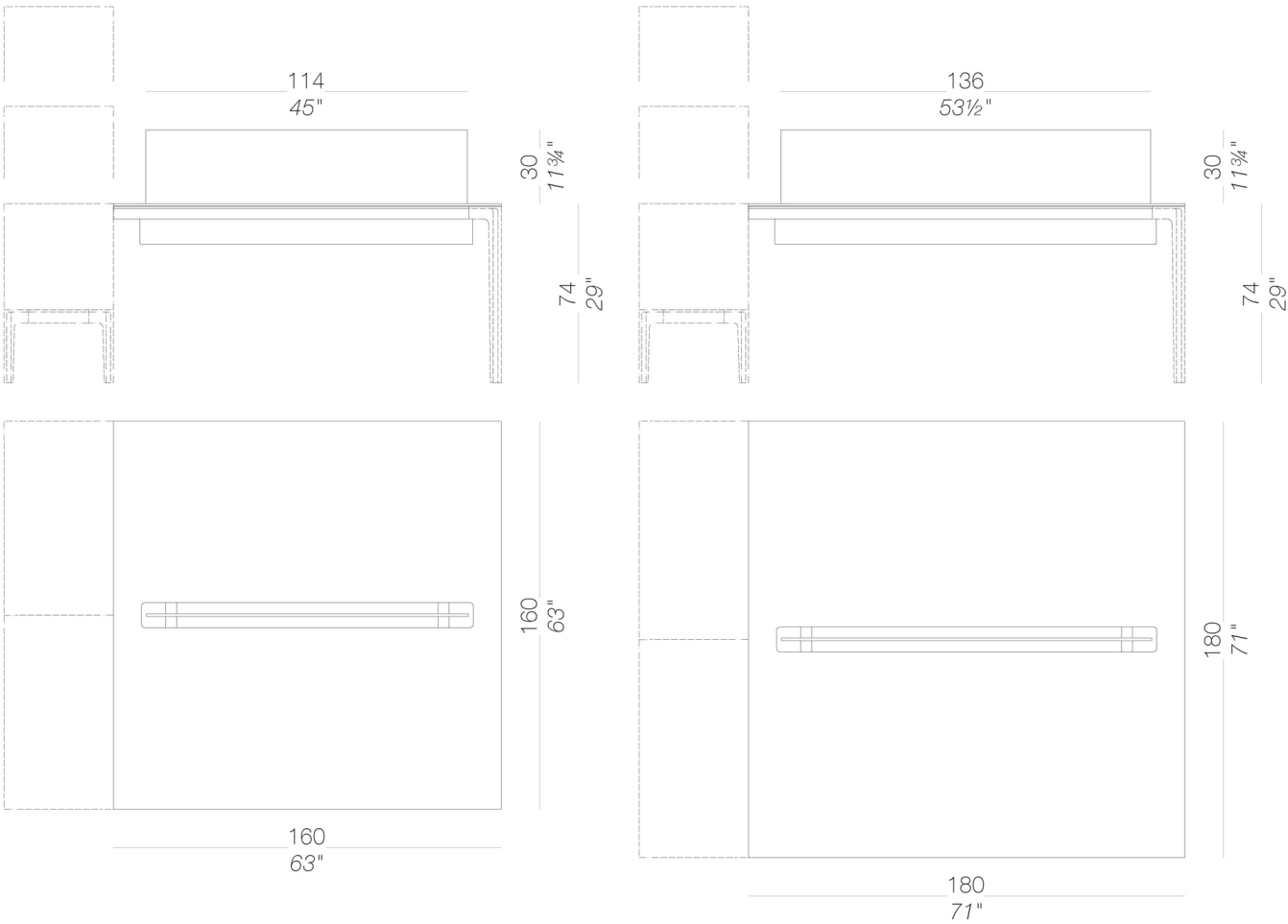
Francesco Rota | 2016



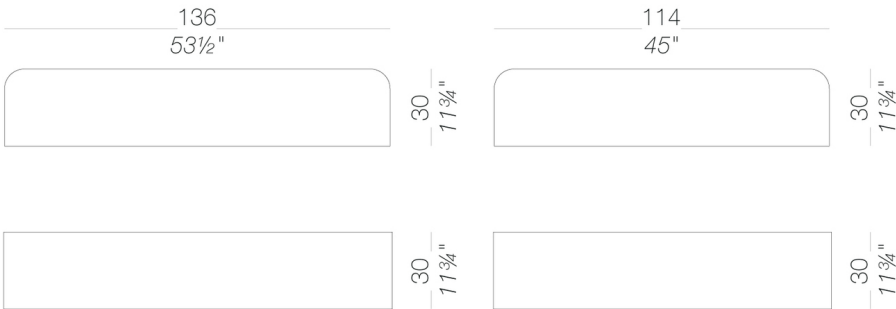


# ADD SYSTEM

Francesco Rota | 2016



## partition panel





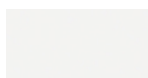
# ADD SYSTEM

Francesco Rota | 2016

## frame



powder coating  
black  
1 Colors

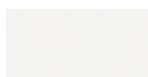


powder coating  
white  
1 Colors

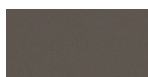
## top



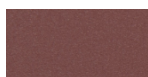
HPL 10 mm  
black HPL fenix  
1 Colors



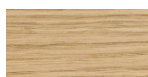
HPL 10 mm  
white HPL fenix  
1 Colors



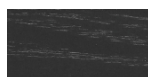
HPL 10 mm  
HPL fenix grigio  
Londra  
1 Colors



HPL 10 mm  
HPL fenix rosso  
Jaipur  
1 Colors

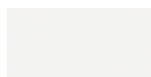


wood  
blanch oak  
1 Colors



wood  
black open pore  
1 Colors

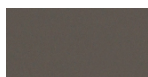
## modesty panel



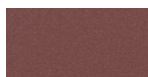
HPL 10 mm  
white HPL fenix  
1 Colors



HPL 10 mm  
black HPL fenix  
1 Colors

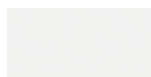


HPL 10 mm  
HPL fenix grigio  
Londra  
1 Colors



HPL 10 mm  
HPL fenix rosso  
Jaipur  
1 Colors

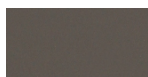
## partition panel



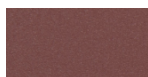
HPL 10 mm  
white HPL fenix  
1 Colors



HPL 10 mm  
black HPL fenix  
1 Colors



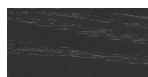
HPL 10 mm  
HPL fenix grigio  
Londra  
1 Colors



HPL 10 mm  
HPL fenix rosso  
Jaipur  
1 Colors



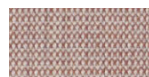
wood  
blanch oak  
1 Colors



wood  
black open pore  
1 Colors



fabric  
Hallingdal 65 - Grade C  
58 Colors



fabric  
Canvas 2 - Grade C  
45 Colors



fabric  
Steelcut Trio 3 - Grade D  
54 Colors



fabric  
Remix 3 - Grade C  
72 Colors



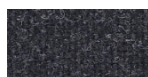
fabric  
Fiord 2 - Grade C  
39 Colors



fabric  
Divina MD - Grade D  
27 Colors



fabric  
Divina Melange 3 - Grade D  
38 Colors



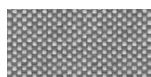
fabric  
Tonica 2 - Grade C  
39 Colors



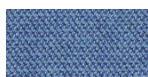
fabric  
Medley - Grade A  
37 Colors



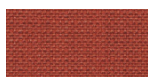
fabric  
Jet - Grade A  
66 Colors



fabric  
Maya - Grade A  
43 Colors



fabric  
Capture - Grade B  
60 Colors



fabric  
Crisp - Grade B  
40 Colors



fabric  
Iris - Grade B  
34 Colors



fabric  
Steelcut 3 - Grade D  
40 Colors



fabric  
Grain - Grade B  
50 Colors



fabric  
Re-wool - Grade C  
24 Colors

**consult the portfolio for the range of colors, fabrics, eco-leather, soft-leather.**

## use and maintenance instructions

Clean all parts in wood, leather, fabric and metal with a damp cloth or a diluted neutral cleaner. Do not use cleaners with alcohol, bleach, solvent or abrasive products. Any liquid spilt on the product must be wiped up immediately. When lifting or moving the product, hold it on the structure and not under the seat. The product should not be subjected to unbalanced weights, as it is designed for a proper rest on the foothold (on four legs or on the base). Our company relieves from any responsibility in case of damage caused to fragile floors. Avoid any improper use of the product: do not step on the product, on the footrest or on the armrests. Avoid any movements that could compromise the proper functionality of the product or the safety of the users. Wood and leather, being natural materials, could be easily damaged. Small impurities or imperfections are within quality standard range. Do not expose the product to weather conditions or atmospheric agents, nor to heat sources over 40°C. Also products for outdoor use could

be afflicted by atmospheric agents. The product could undergo possible exterior changes due to particular exposure to heat, humidity and saltiness. An appropriate and frequent maintenance and cleaning of the product enhances its durability. The product could change colour and shade, if exposed to direct sunlight. Maintenance has to be carried out by experienced staff. Dispose of the package only after assembling the product, in order to avoid the loss of ironmongery and components. Once the product has been dismantled, the product itself or its components must be given to the public garbage disposal system, according to the legislation in force.