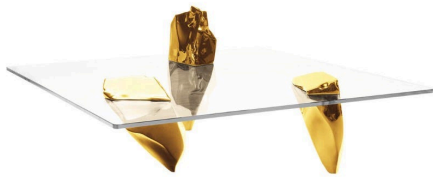


SERENO

Fredrikson Stallard,

In Sereno Fredrikson Stallard create a moment of calm and solitude. The forms themselves are created from shards of glass violently created by the artists, but they become unified in utter stillness by the inclusion of a simple flat sheet and the transformation of the group into polished stainless steel. This brings a reflection of the three unified elements in the surface, creating another of Fredrikson Stallard's recurring themes, rorschach like symmetrical forms. This even further delivers their nature from turmoil to serenity - they resolve themselves through the reorganization of symmetry.



Sculpture legs in cast aluminum with metallic finish made by Sputtering technology in gold color. Top in extra clear glass 15 mm thick. Indoor use only.

SKU

D01055H454B26

MATERIAL

glass, metallized aluminum

COLOUR

transparent, gold